

Revisions

Issue	Date	Note
1	06/03/2025	See GTXPDC/1060

1. Mechanical

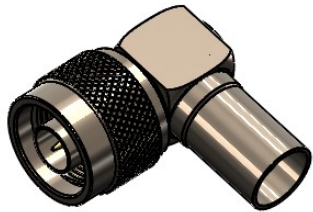
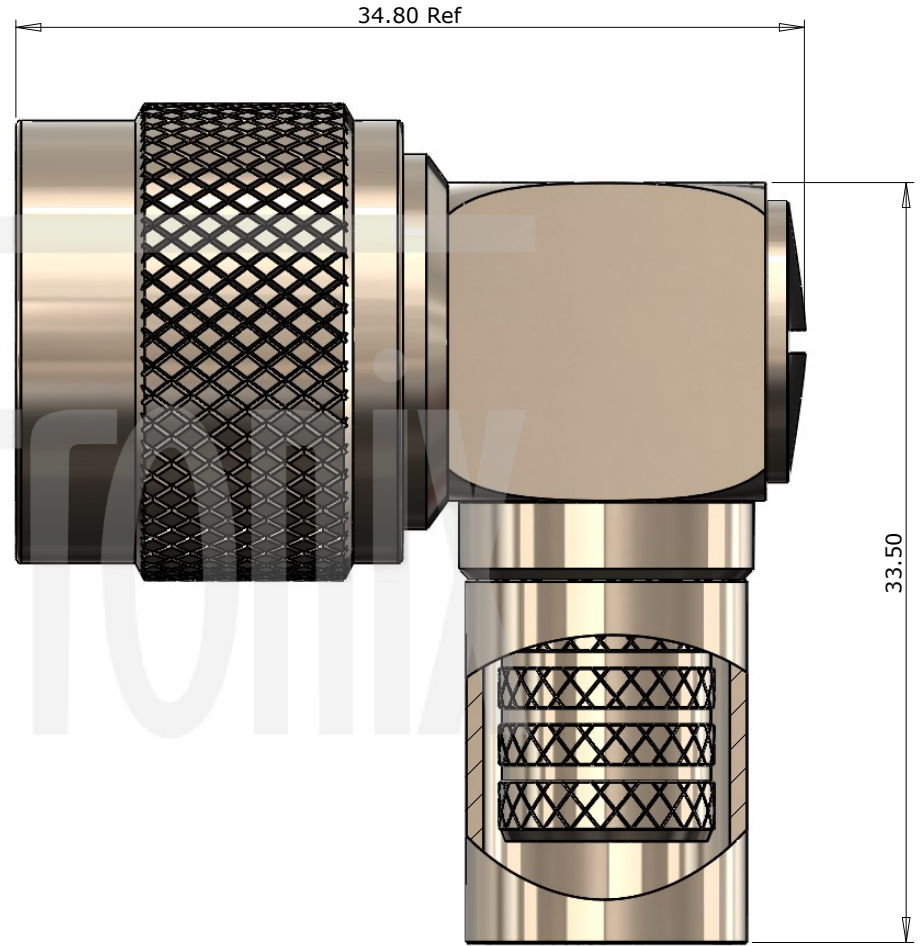
Cable Retention	Equal to breaking strain of cable
Durability	500 mating cycles
Fixing Method	Crimp
Contact Termination	Solder

2. Environmental

RoHS Compliant	Yes
Temperature Range	-65 to +165 degrees C

3. Electrical

Dielectric Withstanding	2500 Volts RMS Maximum
Impedance	50 ohms
Interface Frequency	11 GHz
Working Voltage	1500 Volts RMS Maximum



Description	Material	Finish
6 End Cap	Brass	Nickel
5 Ferrule	Brass	Nickel
4 Dielectric	PTFE	White
3 Pin	Brass	Gold
2 Coupling Nut	Brass	Nickel
1 Body	Brass	Nickel

Unless otherwise specified tolerances
 0.5-5 = ±0.2
 >5-30 = ±0.4
 >30-120 = ±0.6
 >120-315 = ±1.0
 >315-1000 = ±1.6
 Angles = ±5°
 Units = mm

This document is the confidential property of Gigatronix Limited and may not be copied, reproduced or transmitted to any third party without written authorisation.



Author	PJP
Drawn by	PJP
Drawing date	06/03/2025
Checked by	DB
Checked date	06/03/2025
Scale	Not to scale

Part Number	NT17-0519-C06
Title:	N Type Crimp Right Angle Plug, Nickel Plated, LBC400, Belden 9913, RA519

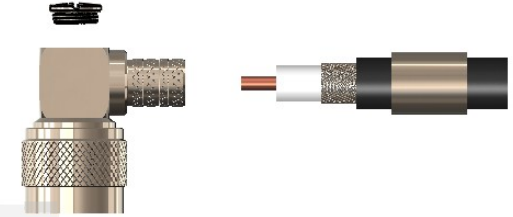
Revisions

Issue	Date	Note
1	06/03/2025	See GTXPDC/1060

ASSEMBLY INSTRUCTIONS

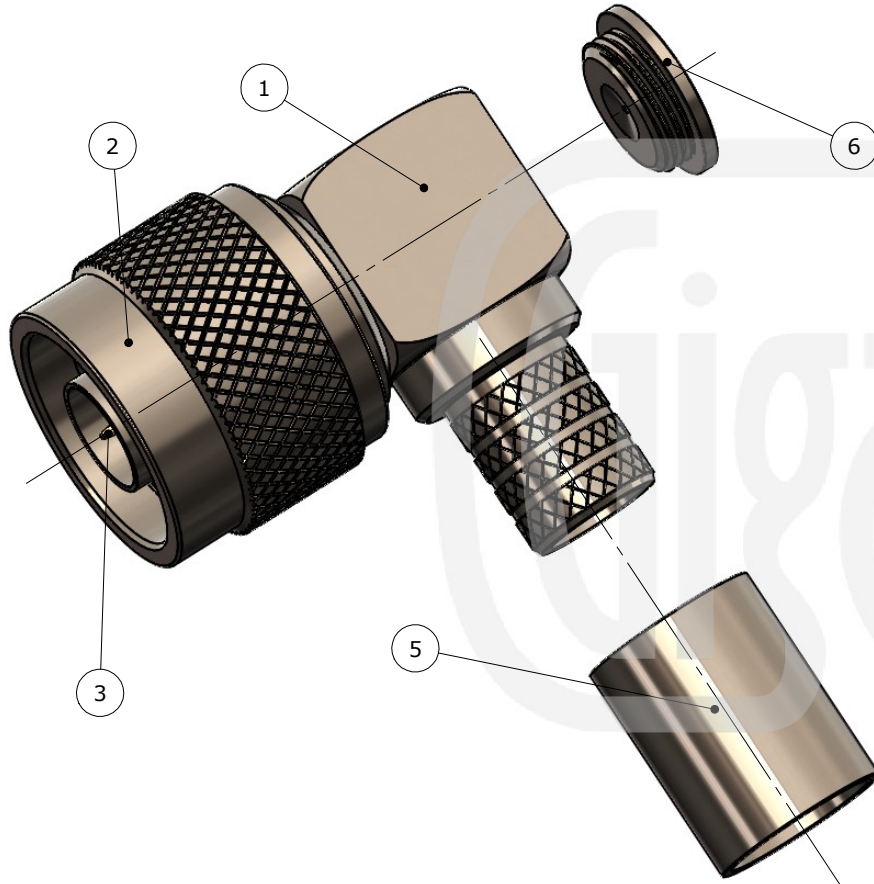
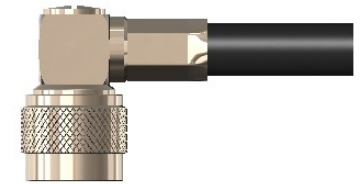
Assembly Instructions:

1) Slide the ferrule onto the cable and strip the cable to the dimensions as shown, taking care not to nick the centre conductor or braid



2) Insert the cable into the body, ensuring that the cable braid is on the outside of the connector mandril and that the centre core locates in the internal mounting post

3) Slide the ferrule forward and crimp. Solder the centre core of the cable to the mounting post and screw in the end cap



Crimp Die Sizes:
10.90mm Hex., Solder centre core

Strip Dimensions:
A=11.0mm, B=9.5mm, C=4.0mm



Description	Material	Finish
6 End Cap	Brass	Nickel
5 Ferrule	Brass	Nickel
4 Dielectric	PTFE	White
3 Pin	Brass	Gold
2 Coupling Nut	Brass	Nickel
1 Body	Brass	Nickel

Unless otherwise specified tolerances
 0.5-5 = ±0.2
 >5-30 = ±0.4
 >30-120 = ±0.6
 >120-315 = ±1.0
 >315-1000 = ±1.6
 Angles = ±5°
 Units = mm

This document is the confidential property of Gigatronix Limited and may not be copied, reproduced or transmitted to any third party without written authorisation.



Part Number NT17-0519-C06
Title: N Type Crimp Right Angle Plug, Nickel Plated, LBC400, Belden 9913, RA519

Author	PJP
Drawn by	PJP
Drawing date	06/03/2025
Checked by	DB
Checked date	06/03/2025
Scale	Not to scale