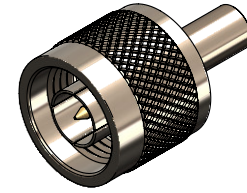


Revisions

Issue	Date	Note
1	13/11/2023	See GTXPDC/867



1. Mechanical

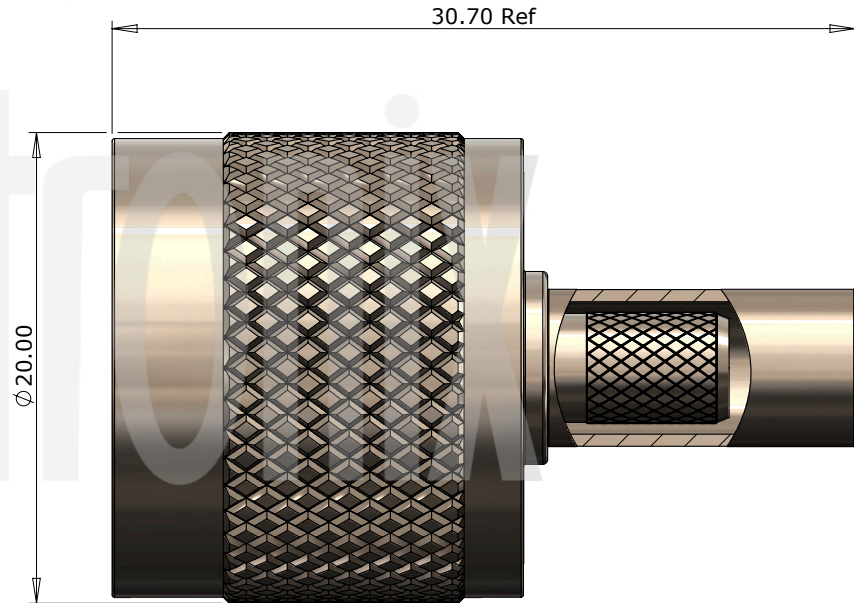
Cable Retention	Equal to breaking strain of cable
Fixing Method	Crimp
Durability	500 mating cycles
Contact Termination	Solder

2. Environmental

RoHS Compliant	Yes
Temperature Range	-65 to +165 degrees C

3. Electrical

Dielectric Withstanding	2500 Volts RMS Maximum
Impedance	50 ohms
Interface Frequency	11 GHz
Working Voltage	1500 Volts RMS Maximum



Description	Material	Finish
6 Insulator	PTFE	White
5 Ferrule	Brass	Nickel
4 Dielectric	PTFE	White
3 Coupling Nut	Brass	Nickel
2 Pin	Brass	Gold
1 Body	Brass	Nickel

Unless otherwise specified tolerances
 0.5-5 = ±0.2
 >5-30 = ±0.4
 >30-120 = ±0.6
 >120-315 = ±1.0
 >315-1000 = ±1.6
 Angles = ±5°
 Units = mm

This document is the confidential property of Gigatronix Limited and may not be copied, reproduced or transmitted to any third party without written authorisation.



Author	PJP
Drawn by	PJP
Drawing date	13/11/2023
Checked by	DB
Checked date	13/11/2023
Scale	Not to scale

Part Number NT15-L200-C06
Title: N Type Crimp Plug, Nickel Plated, LMR200

Revisions

Issue	Date	Note
1	13/11/2023	See GTXPDC/867

ASSEMBLY INSTRUCTIONS

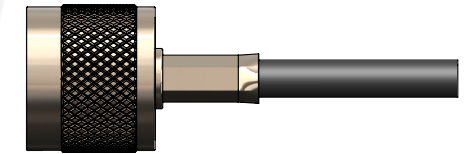
Assembly Instructions:

1) Slide the ferrule onto the cable and strip the cable to the dimensions as shown, taking care not to nick the centre conductor or braid.



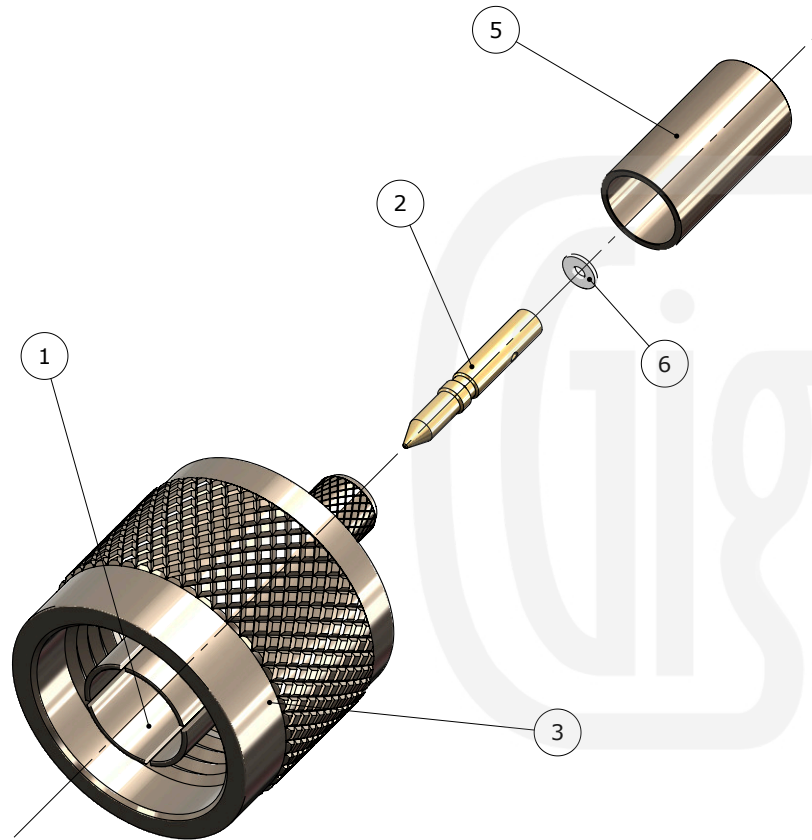
2) Slide the insulator over the centre core (optional for cables without bonded foil) and then solder the pin onto the centre core. Slide the pin into the body until fully captivated, ensuring that the cable braid is on the outside of the connector mandril.

3) Slide the ferrule forward and crimp.



Crimp Die Sizes:
5.41mm Hex., Solder centre core

Strip Dimensions:
A=7.0mm, B=2.0mm, C=4.0mm



Description	Material	Finish
6 Insulator	PTFE	White
5 Ferrule	Brass	Nickel
4 Dielectric	PTFE	White
3 Coupling Nut	Brass	Nickel
2 Pin	Brass	Gold
1 Body	Brass	Nickel

Unless otherwise specified tolerances
 0.5-5 = ±0.2
 >5-30 = ±0.4
 >30-120 = ±0.6
 >120-315 = ±1.0
 >315-1000 = ±1.6
 Angles = ±5°
 Units = mm

This document is the confidential property of Gigatronix Limited and may not be copied, reproduced or transmitted to any third party without written authorisation.



Part Number NT15-L200-C06
Title: N Type Crimp Plug, Nickel Plated, LMR200

Author	PJP
Drawn by	PJP
Drawing date	13/11/2023
Checked by	DB
Checked date	13/11/2023
Scale	Not to scale