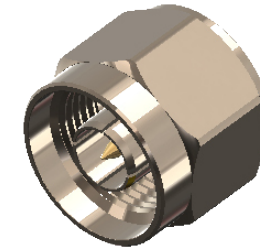


Revisions

Issue	Date	Note
3	06/12/2022	See note GTXPDC/618 - Checked DB 06/12/2022

DATASHEET



1. Mechanical

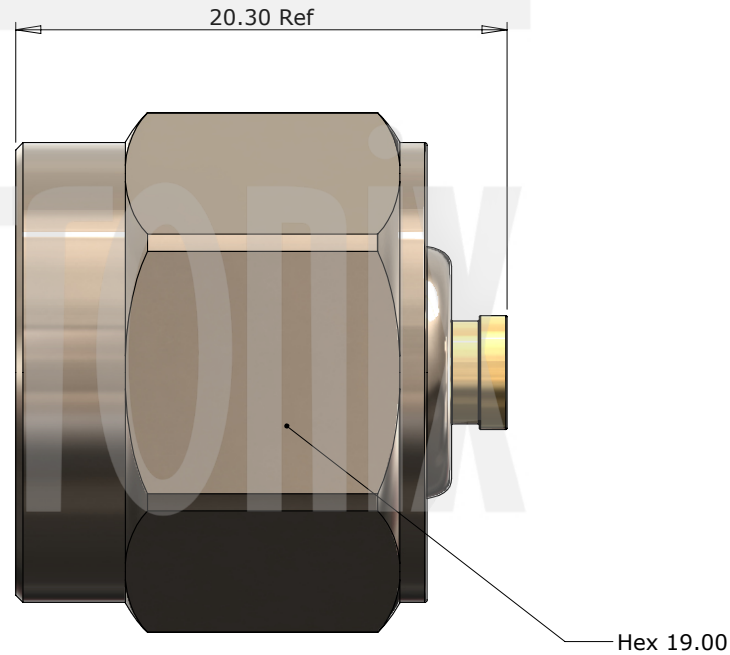
Cable Retention Equal to breaking strain of cable
 Durability 500 mating cycles

2. Environmental

RoHS Compliant Yes
 Temperature Range -65 to +165 degrees C

3. Electrical

Dielectric Withstanding 2500 Volts RMS Maximum
 Impedance 50 ohms
 Interface Frequency 11 GHz
 Working Voltage 1500 Volts RMS Maximum



4	Dielectric	PTFE	White
3	Pin	Brass	Gold
2	Coupling Nut	Brass	Nickel
1	Body	Brass	Gold / Nickel
	Description	Material	Finish

Unless otherwise specified tolerances
 0.5-5 = ±0.2
 >5-30 = ±0.4
 >30-120 = ±0.6
 >120-315 = ±1.0
 >315-1000 = ±1.6
 Angles = ±5°
 Units = mm

This document is the confidential property of Gigatronix Limited and may not be copied, reproduced or transmitted to any third party without written authorisation.



Author	PJP
Drawn by	PJP
Drawing date	10/08/2020
Checked by	SM
Checked date	29/04/2021
Scale	Not to scale

Part Number NT15-0402-R06-2
Title: N Type Solder Plug, Nickel Plated, Hex Coupling Nut, RG402, .141 semi-rigid

Revisions

Issue	Date	Note
3	06/12/2022	See note GTXPDC/618 - Checked DB 06/12/2022

ASSEMBLY INSTRUCTIONS

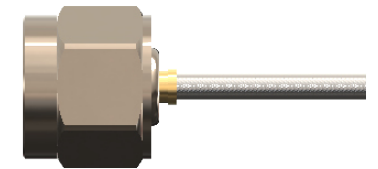
Assembly Instructions:

1) Strip the cable to the dimensions as shown, taking care not to nick the centre conductor



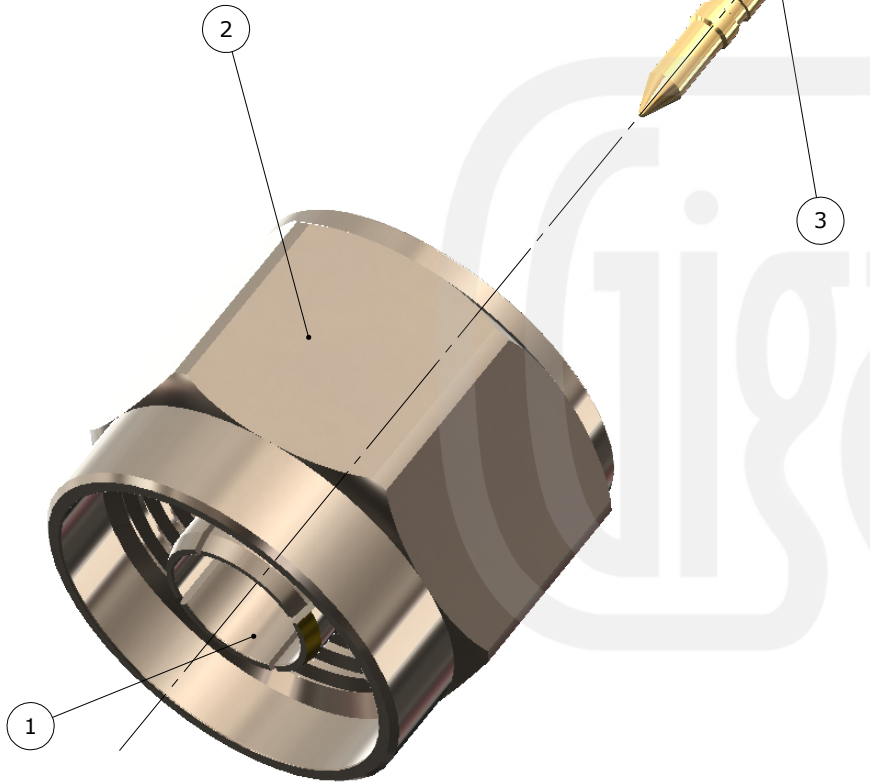
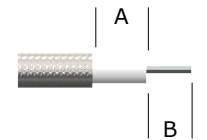
2) Solder the pin onto the centre core and slide the pin into the body, ensuring that the contact is fully located

3) Solder the outer shield of the cable to the connector mandril



Strip Dimensions:

A=0.5mm, B=3.5mm



Description	Material	Finish
4 Dielectric	PTFE	White
3 Pin	Brass	Gold
2 Coupling Nut	Brass	Nickel
1 Body	Brass	Gold / Nickel

Unless otherwise specified tolerances
 0.5-5 = ±0.2
 >5-30 = ±0.4
 >30-120 = ±0.6
 >120-315 = ±1.0
 >315-1000 = ±1.6
 Angles = ±5°
 Units = mm

This document is the confidential property of Gigatronix Limited and may not be copied, reproduced or transmitted to any third party without written authorisation.



Author	PJP
Drawn by	PJP
Drawing date	10/08/2020
Checked by	SM
Checked date	29/04/2021
Scale	Not to scale

Part Number NT15-0402-R06-2
Title: N Type Solder Plug, Nickel Plated, Hex Coupling Nut, RG402, .141 semi-rigid