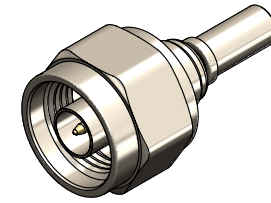


Revisions

Issue	Date	Note
4	22/05/2024	See GTXPDC/938



1. Mechanical

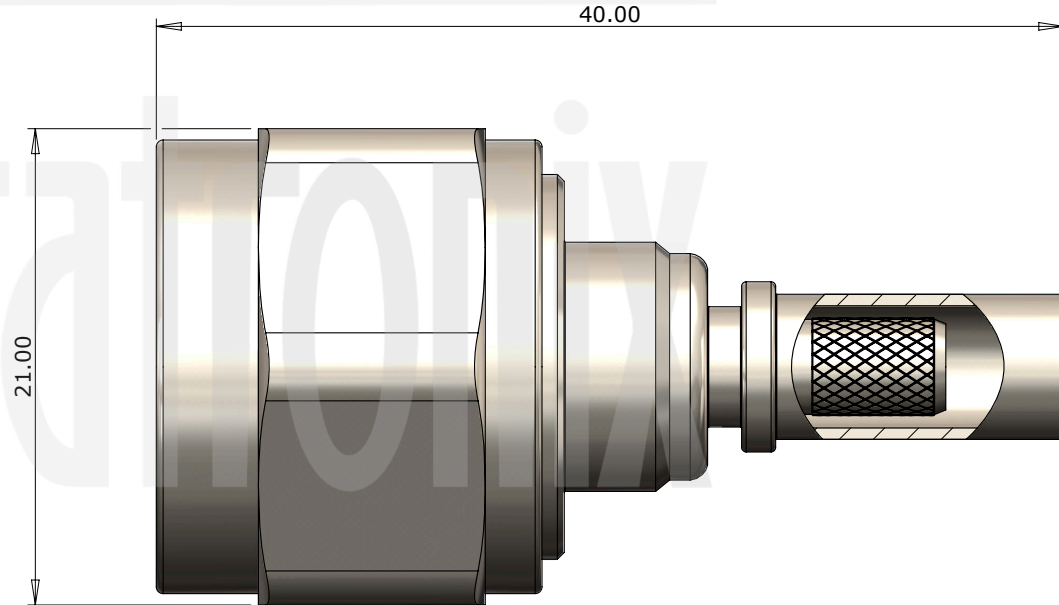
Cable Retention	Equal to breaking strain of cable
Durability	500 mating cycles
Fixing Method	Crimp
Contact Termination	Solder

2. Environmental

RoHS Compliant	Yes
Temperature Range	-65 to +165 degrees C

3. Electrical

Dielectric Withstanding	2500 Volts RMS Maximum
Impedance	50 ohms
Interface Frequency	11 GHz
Working Voltage	1500 Volts RMS Maximum



8			
7			
6	Ferrule	Brass	CTZ Tri-Alloy
5	Dielectric	PTFE	White
4	Integral Pin	Beryllium Copper	Gold
3	Pin	Brass	Gold
2	Coupling Nut	Brass	CTZ Tri-Alloy
1	Body	Brass	CTZ Tri-Alloy
	Description	Material	Finish

Unless otherwise specified tolerances
 0,5-5 = ±0,2
 >5-30 = ±0,4
 >30-120 = ±0,6
 >120-315 = ±1,0
 >315-1000 = ±1,6
 Angles = ±5°
 Units = mm

This document is the confidential property of Gigatronix Limited and may not be copied, reproduced or transmitted to any third party without written authorisation.



Author	PJP
Drawn by	PJP
Drawing date	01/04/14
Checked by	DB
Checked date	14/12/2018
Scale	Not to scale

Part Number NT15-0058-C49WP

Title: N Type Waterproof Crimp Plug, IP68, Tri-Alloy Plated, Hex Coupling Nut, RG58, LBC195, URM43

Revisions

Issue	Date	Note
4	22/05/2024	See GTXPCD/938

ASSEMBLY INSTRUCTIONS

Assembly Instructions:

1) Slide the ferrule onto the cable and strip the cable to the dimensions as shown, taking care not to nick the centre conductor or braid

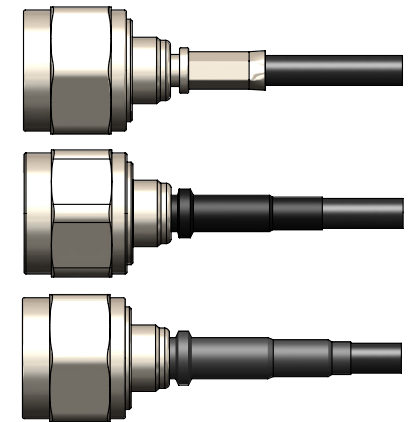


2) Solder the pin onto the centre core and then push into the body, ensuring that the cable braid is on the outside of the connector mandril and that the centre pin is fully located within the integral pin

3) Slide the ferrule forward and crimp.

4) Apply adhesive lined heatshrink x 25mm up and over the mandril

5) Apply adhesive lined heatshrink x 30mm over the top of the first heatshrink



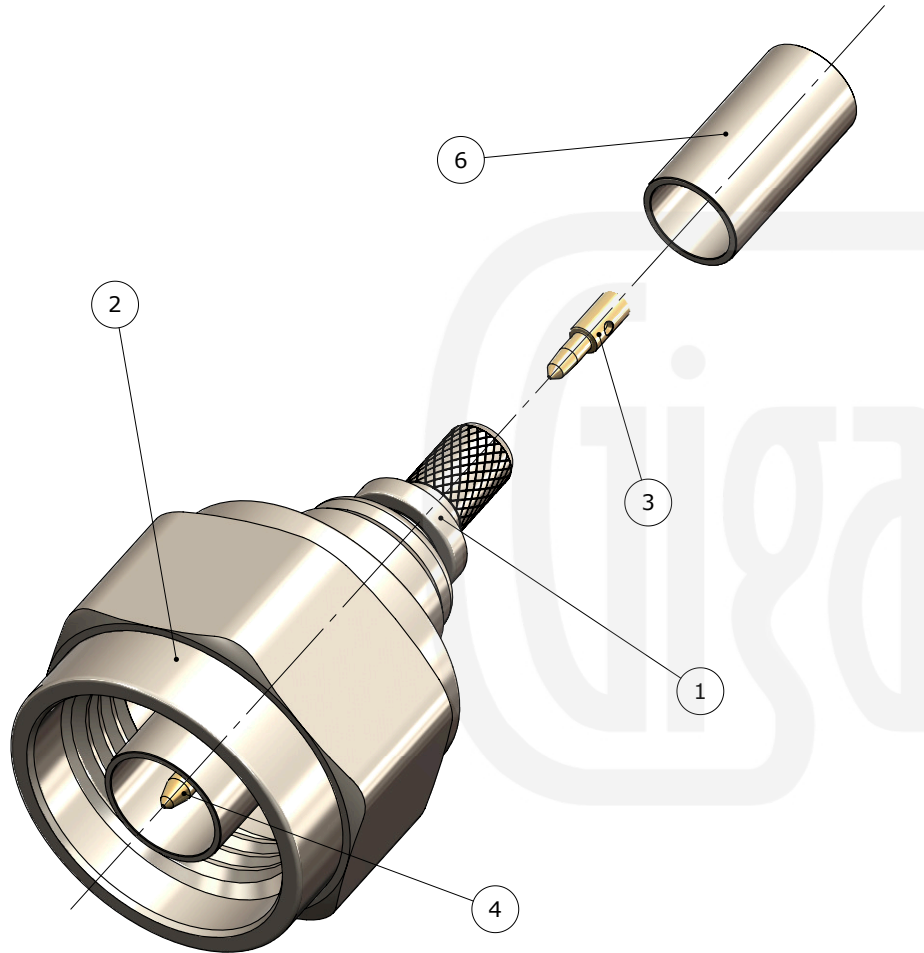
Strip Dimensions:

A=7.5mm, B=1.5mm, C=2.8mm



Crimp Die Sizes:

5.41mm Hex., Solder centre core



Description	Material	Finish
6 Ferrule	Brass	CTZ Tri-Alloy
5 Dielectric	PTFE	White
4 Integral Pin	Beryllium Copper	Gold
3 Pin	Brass	Gold
2 Coupling Nut	Brass	CTZ Tri-Alloy
1 Body	Brass	CTZ Tri-Alloy

Unless otherwise specified tolerances
 0.5-5 = ±0.2
 >5-30 = ±0.4
 >30-120 = ±0.6
 >120-315 = ±1.0
 >315-1000 = ±1.6
 Angles = ±5°
 Units = mm

This document is the confidential property of Gigatronix Limited and may not be copied, reproduced or transmitted to any third party without written authorisation.



Part Number NT15-0058-C49WP

Title: N Type Waterproof Crimp Plug, IP68, Tri-Alloy Plated, Hex Coupling Nut, RG58, LBC195, URM43

Author	PJP
Drawn by	PJP
Drawing date	01/04/14
Checked by	DB
Checked date	14/12/2018
Scale	Not to scale