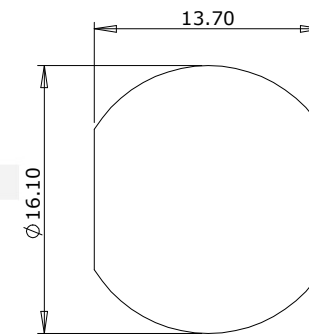
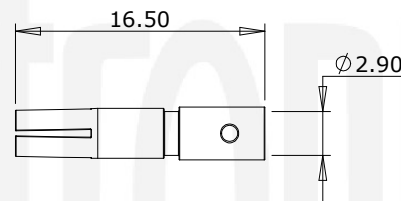
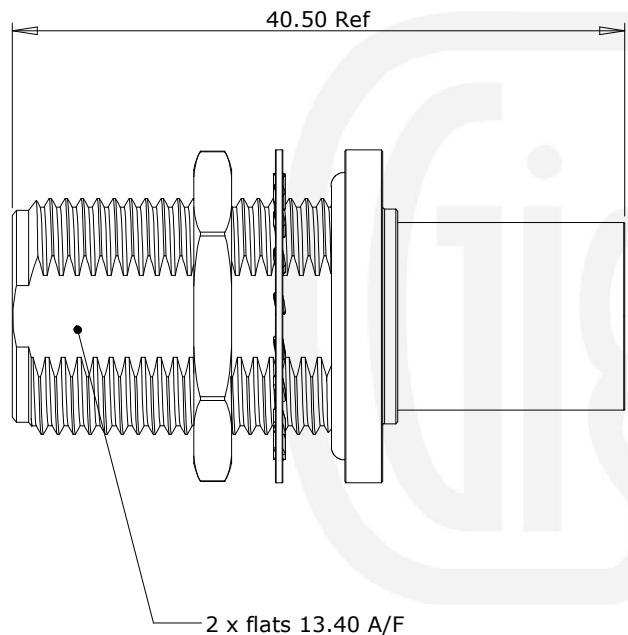


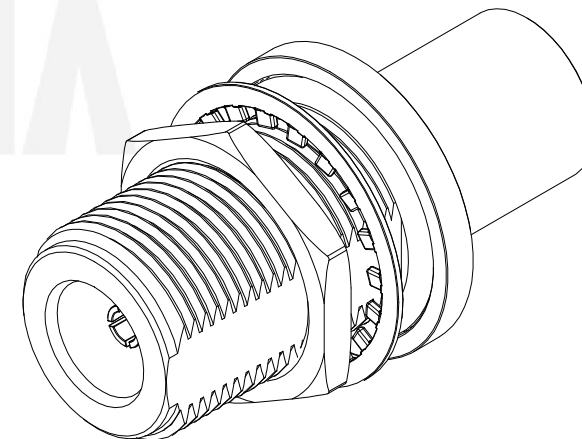
Revisions

Issue	Date	Note
1	01/02/2021	See GTXPDC/257

SUMMARY VIEW



Panel Cutout



7	Locknut	Brass	Nickel
6	O Ring	Rubber	Black
5	Washer	Brass	Nickel
4	Dielectric	PTFE	White
3	Ferrule	Brass	Nickel
2	Contact	Phosphor Bronze	Gold
1	Body	Brass	Nickel
	Description	Material	Finish

Unless otherwise specified tolerances
 0.5-5 = ±0.2
 >5-30 = ±0.4
 >30-120 = ±0.6
 >120-315 = ±1.0
 >315-1000 = ±1.6
 Angles = ±5°
 Units = mm

This document is the confidential property of Gigatronix Limited and may not be copied, reproduced or transmitted to any third party without written authorisation.



Author	PJP
Drawn by	PJP
Drawing date	01/02/2021
Checked by	DB
Checked date	02/02/2021
Scale	2 : 1

Part Number NT02-0519-C06
Title: N Type Crimp Bulkhead Jack, Nickel Plated, LBC400, Belden 9913, RA519