

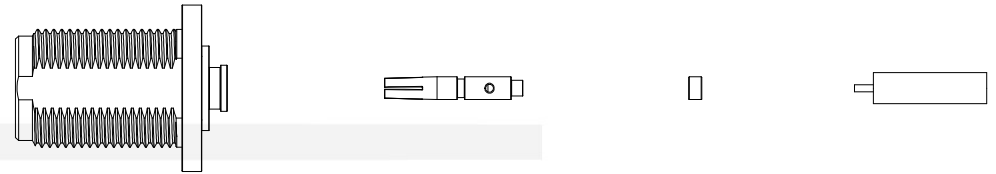
**Revisions**

Issue	Date	Note
1	20/10/2021	See note GTXPDC/333

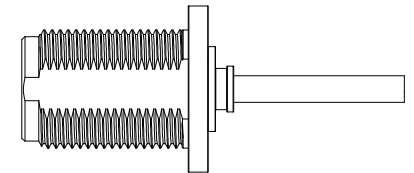
**ASSEMBLY VIEW**

**Assembly Instructions:**

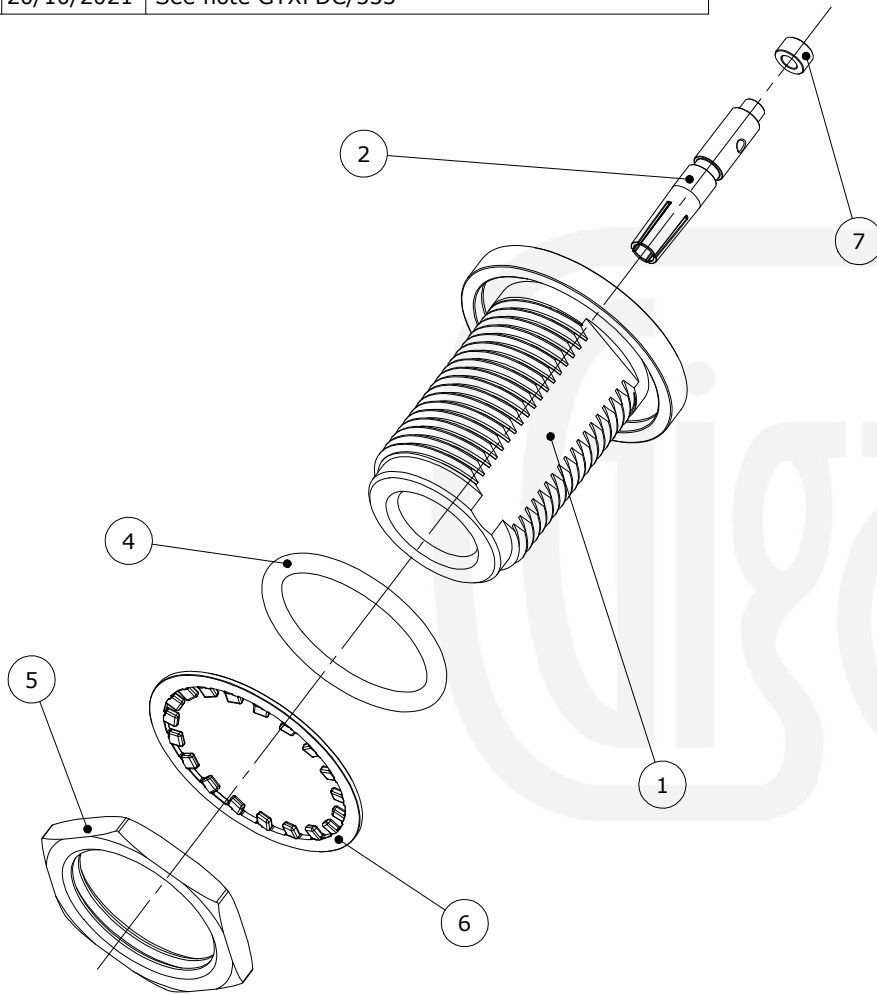
1) Strip the cable to the dimensions as shown, taking care not to nick the centre conductor



2) Fit the insulator over the centre core and then solder the contact onto the centre core. Push into the body until the contact is fully located

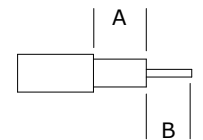


3) Solder the outer shield of the cable to the connector mandril



**Strip Dimensions**

A=0.0mm, B=5.0mm



7	Insulator	PTFE	White
6	Washer	Brass	Nickel
5	Lock Nut	Brass	Nickel
4	O Ring	Rubber	Black
3	Dielectric	PTFE	White
2	Contact	Phosphor Bronze	Gold
1	Body	Brass	Nickel
	<b>Description</b>	<b>Material</b>	<b>Finish</b>

Unless otherwise specified tolerances  
 0.5-5 = ±0.2  
 >5-30 = ±0.4  
 >30-120 = ±0.6  
 >120-315 = ±1.0  
 >315-1000 = ±1.6  
 Angles = ±5°  
 Units = mm

This document is the confidential property of Gigatronix Limited and may not be copied, reproduced or transmitted to any third party without written authorisation.



<b>Author</b>	PJP
<b>Drawn by</b>	PJP
<b>Drawing date</b>	20/10/2021
<b>Checked by</b>	DB
<b>Checked date</b>	21/10/2021
<b>Scale</b>	Not to scale

**Part Number** NT02-0402-R06

**Title:** N Type Solder Bulkhead Jack, Nickel Plated, RG402