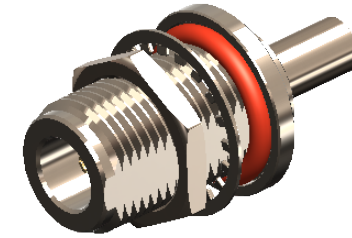


**Revisions**

Issue	Date	Note
1	18/01/2023	See note GTXPDC/641

DATASHEET



**1. Mechanical**

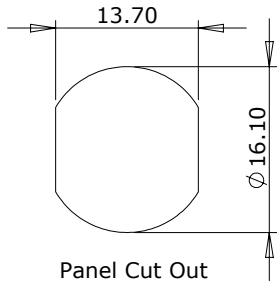
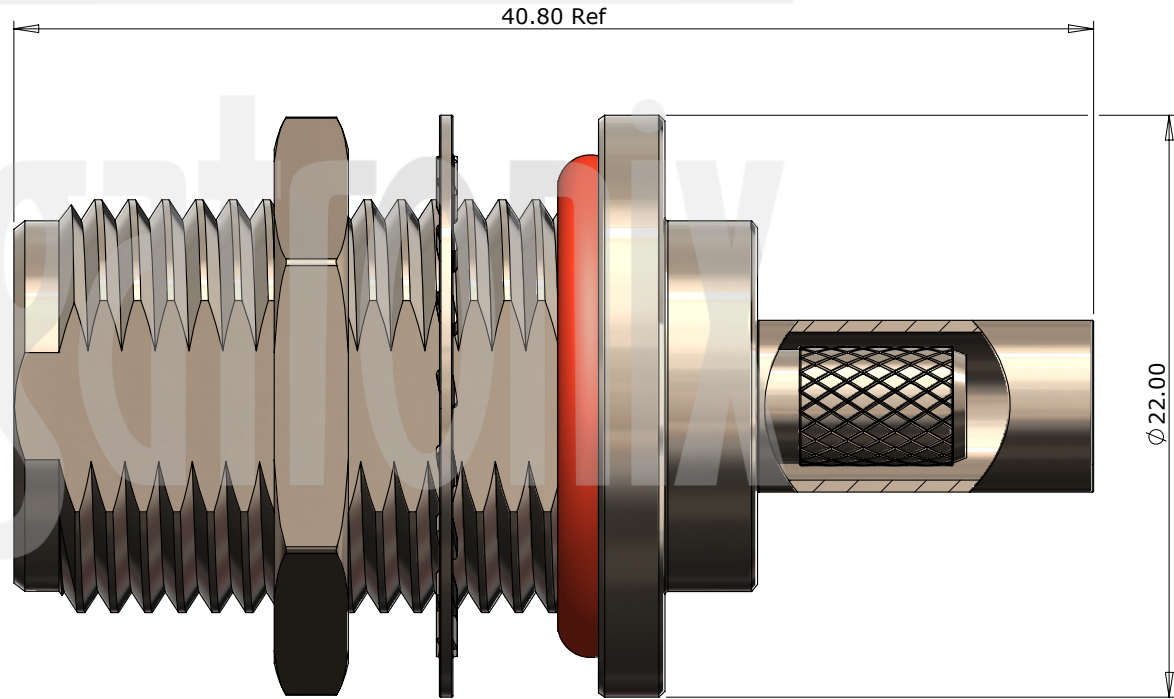
Fixing Method	Crimp
Durability	500 mating cycles
Cable Retention	Equal to breaking strain of cable

**2. Environmental**

RoHS Compliant	Yes
Temperature Range	-65 to +165 degrees C

**3. Electrical**

Dielectric Withstanding	2500 Volts RMS Maximum
Impedance	50 ohms
Interface Frequency	11 GHz
Working Voltage	1500 Volts RMS Maximum



8	Washer	Brass	Nickel
7	Lock Nut	Brass	Nickel
6	O Ring	Silicone	Red
5	Ferrule	Brass	Nickel
4	Dielectric	PTFE	White
3	Pin	Brass	Gold
2	Contact	Brass	Gold
1	Body	Brass	Nickel
	<b>Description</b>	<b>Material</b>	<b>Finish</b>

Unless otherwise specified tolerances  
 0.5-5 = ±0.2  
 >5-30 = ±0.4  
 >30-120 = ±0.6  
 >120-315 = ±1.0  
 >315-1000 = ±1.6  
 Angles = ±5°  
 Units = mm

This document is the confidential property of Gigatronix Limited and may not be copied, reproduced or transmitted to any third party without written authorisation.



<b>Author</b>	PJP
<b>Drawn by</b>	PJP
<b>Drawing date</b>	18/01/2023
<b>Checked by</b>	DB
<b>Checked date</b>	18/01/2023
<b>Scale</b>	Not to scale

**Part Number** NT02-0058-C06-1

**Title:** N Type Crimp Bulkhead Jack, Nickel Plated, RG58, LBC195

Revisions		
Issue	Date	Note
1	18/01/2023	See note GTXPDC/641

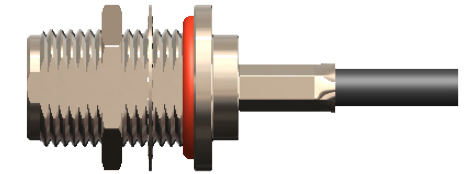
# ASSEMBLY INSTRUCTIONS

## Assembly Instructions

1) Slide the ferrule onto the cable and strip the cable to the dimensions as shown, taking care not to nick the centre conductor or braid.



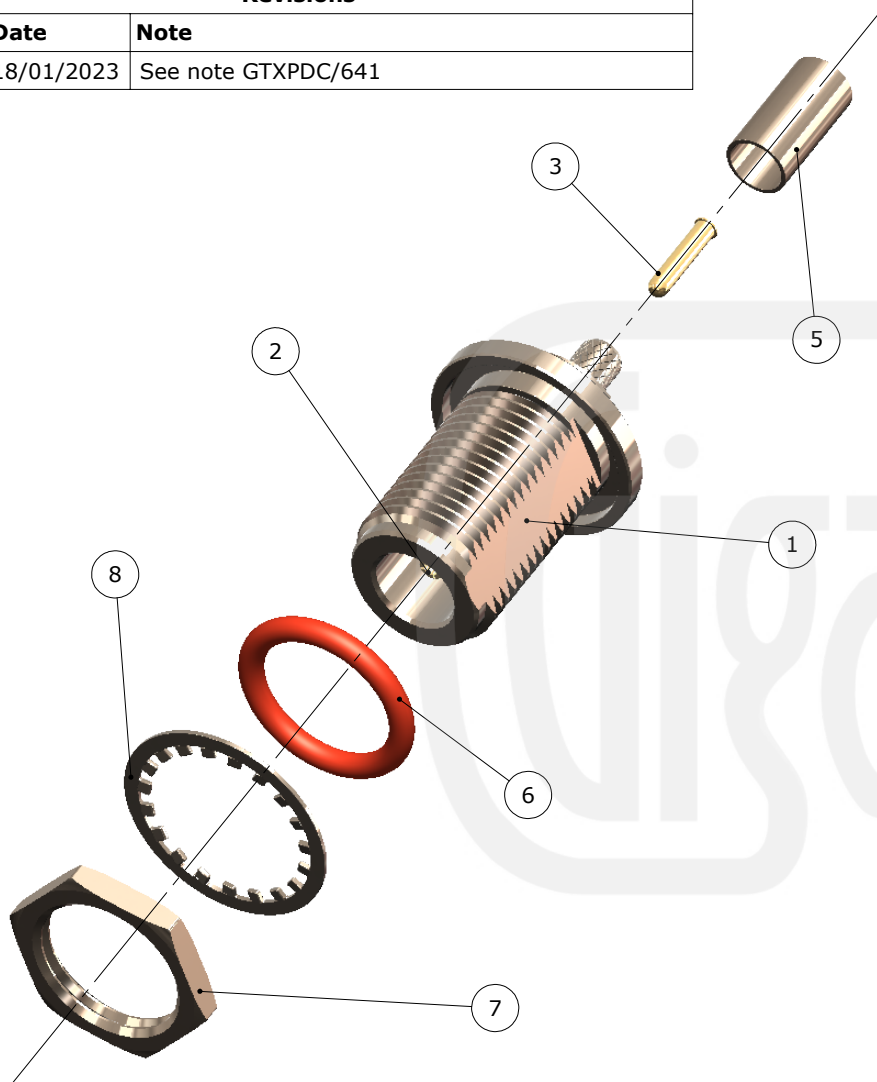
2) Crimp the pin onto the centre core and then slide the pin into the body until fully located in the integral contact, ensuring that the cable braid is on the outside of the connector mandril.



3) Slide the ferrule forward and crimp.

**Crimp Die Sizes:**  
5.41mm Hex., 1.69 Hex.

**Strip Dimensions:**  
A=7.0mm, B=4.5mm, C=3.5mm



8	Washer	Brass	Nickel	Unless otherwise specified tolerances 0.5-5 = ±0.2 >5-30 = ±0.4 >30-120 = ±0.6 >120-315 = ±1.0 >315-1000 = ±1.6 Angles = ±5° Units = mm
7	Lock Nut	Brass	Nickel	
6	O Ring	Silicone	Red	
5	Ferrule	Brass	Nickel	
4	Dielectric	PTFE	White	
3	Pin	Brass	Gold	This document is the confidential property of Gigatronix Limited and may not be copied, reproduced or transmitted to any third party without written authorisation.
2	Contact	Brass	Gold	
1	Body	Brass	Nickel	
	<b>Description</b>	<b>Material</b>	<b>Finish</b>	



<b>Author</b>	PJP
<b>Drawn by</b>	PJP
<b>Drawing date</b>	18/01/2023
<b>Checked by</b>	DB
<b>Checked date</b>	18/01/2023
<b>Scale</b>	Not to scale

**Part Number** NT02-0058-C06-1

**Title:** N Type Crimp Bulkhead Jack, Nickel Plated, RG58, LBC195