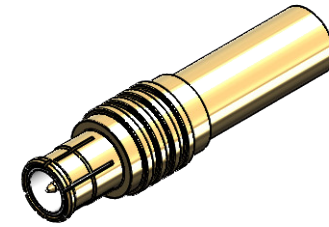


**Revisions**

| Issue | Date       | Note           |
|-------|------------|----------------|
| 4     | 16/07/2024 | See GTXPDC/973 |

**DATASHEET**



**1. Mechanical**

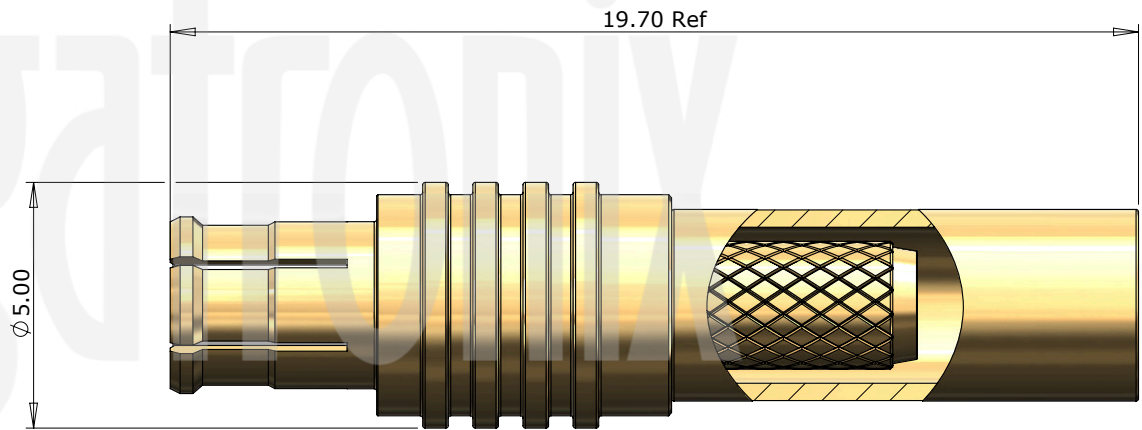
|                     |                                   |
|---------------------|-----------------------------------|
| Fixing Method       | Crimp                             |
| Cable Retention     | Equal to breaking strain of cable |
| Durability          | 500 mating cycles                 |
| Contact Termination | Crimp                             |

**2. Environmental**

|                   |                       |
|-------------------|-----------------------|
| RoHS Compliant    | Yes                   |
| Temperature Range | -65 to +165 degrees C |

**3. Electrical**

|                         |                       |
|-------------------------|-----------------------|
| Dielectric Withstanding | 500 Volts RMS Maximum |
| Impedance               | 50 ohms               |
| Interface Frequency     | 6 GHz                 |
| Working Voltage         | 250 Volts RMS Maximum |



| Description  | Material                 | Finish |
|--------------|--------------------------|--------|
| 4 Ferrule    | Brass                    | Gold   |
| 3 Dielectric | White                    | PTFE   |
| 2 Pin        | Brass                    | Gold   |
| 1 Body       | Brass / Beryllium Copper | Gold   |

Unless otherwise specified tolerances  
 0.5-5 = ±0.2  
 >5-30 = ±0.4  
 >30-120 = ±0.6  
 >120-315 = ±1.0  
 >315-1000 = ±1.6  
 Angles = ±5°  
 Units = mm

This document is the confidential property of Gigatronix Limited and may not be copied, reproduced or transmitted to any third party without written authorisation.



|                     |             |
|---------------------|-------------|
| <b>Author</b>       | PJP         |
| <b>Drawn by</b>     | PJP         |
| <b>Drawing date</b> | 19/04/2018  |
| <b>Checked by</b>   | DB          |
| <b>Checked date</b> | 20/04/2018  |
| <b>Scale</b>        | No to scale |

**Part Number** MX15-D316-C01  
**Title:** MCX Crimp Plug, Gold Plated, 50 ohms, RD316

Revisions

| Issue | Date       | Note           |
|-------|------------|----------------|
| 4     | 16/07/2024 | See GTXPCD/973 |

ASSEMBLY INSTRUCTIONS

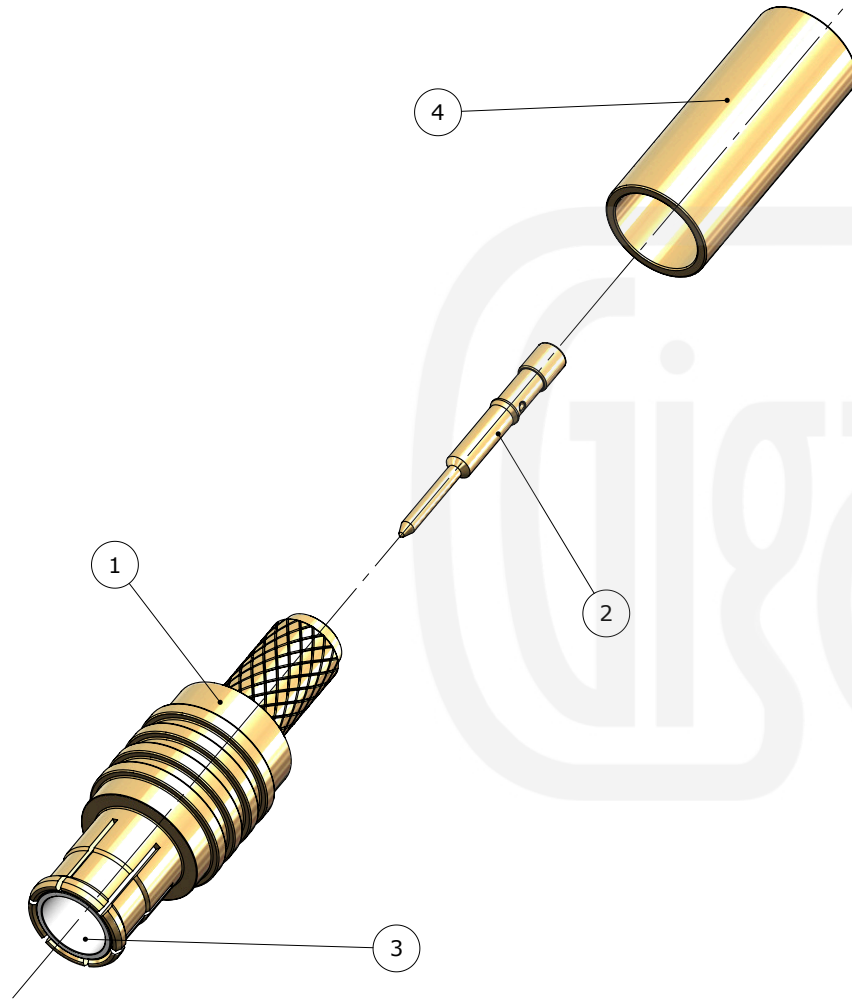
Assembly Instructions

1) Slide the ferrule onto the cable and strip the cable to the dimensions as shown, taking care not to nick the centre conductor or braid.



2) Crimp the pin onto the centre core and slide the pin into the body, ensuring that the cable braid is on the outside of the connector mandril and that the pin is fully located.

3) Slide the ferrule forward and crimp.



**Crimp Die Sizes:**  
3.25mm Hex., 0.72 sq.

**Strip Dimensions:**  
A=4.5mm, B=1.3mm, C=2.5mm



| Description  | Material                 | Finish |
|--------------|--------------------------|--------|
| 4 Ferrule    | Brass                    | Gold   |
| 3 Dielectric | White                    | PTFE   |
| 2 Pin        | Brass                    | Gold   |
| 1 Body       | Brass / Beryllium Copper | Gold   |

Unless otherwise specified tolerances  
 0.5-5 = ±0.2  
 >5-30 = ±0.4  
 >30-120 = ±0.6  
 >120-315 = ±1.0  
 >315-1000 = ±1.6  
 Angles = ±5°  
 Units = mm

This document is the confidential property of Gigatronix Limited and may not be copied, reproduced or transmitted to any third party without written authorisation.



|              |              |
|--------------|--------------|
| Author       | PJP          |
| Drawn by     | PJP          |
| Drawing date | 19/04/2018   |
| Checked by   | DB           |
| Checked date | 20/04/2018   |
| Scale        | Not to scale |

Part Number | MX15-D316-C01

Title: MCX Crimp Plug, Gold Plated, 50 ohms, RD316