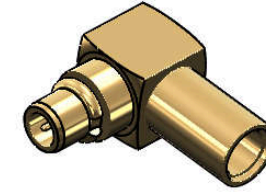


**Revisions**

Issue	Date	Note
4	22/10/2024	See GTXPDC/1015

**DATASHEET**



**1. Mechanical**

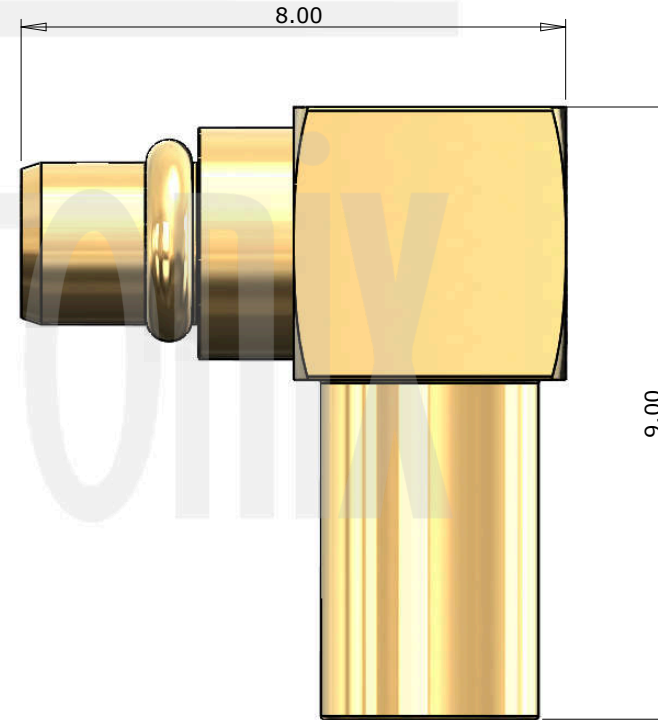
Fixing Method	Solder
Cable Retention	136N
Durability	500 mating cycles
Contact Retention	27N

**2. Environmental**

RoHS Compliant	Yes
Temperature Range	-65 to +165 degrees C

**3. Electrical**

Dielectric Withstanding	500 Volts RMS Maximum
Impedance	50 ohms
Interface Frequency	6 GHz
Working Voltage	170 Volts RMS Maximum



Description	Material	Finish
6 Snap Ring	Beryllium Copper	Gold
5 End Cap	Brass	Gold
4 Insulator	PTFE	White
3 Dielectric	PTFE	White
2 Pin	Phosphor Bronze	Gold
1 Body	Brass	Gold

Unless otherwise specified tolerances  
 0.5-5 = ±0.2  
 >5-30 = ±0.4  
 >30-120 = ±0.6  
 >120-315 = ±1.0  
 >315-1000 = ±1.6  
 Angles = ±5°  
 Units = mm

This document is the confidential property of Gigatronix Limited and may not be copied, reproduced or transmitted to any third party without written authorisation.



<b>Author</b>	PJP
<b>Drawn by</b>	PJP
<b>Drawing date</b>	01/12/2022
<b>Checked by</b>	DB
<b>Checked date</b>	02/12/2022
<b>Scale</b>	Not to scale

**Part Number** MM17-0405-R01

**Title:** MMCX Crimp Right Angle Plug, Gold Plated, RG405, .085 semi-rigid

Revisions

Issue	Date	Note
4	22/10/2024	See GTXPDC/1015

ASSEMBLY INSTRUCTIONS

Assembly Instructions

1) Strip the cable to the dimensions as shown, taking care not to nick the centre conductor or braid.



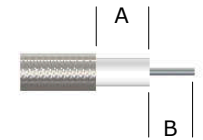
2) Slide the cable into the body so that the centre core of the cable locates in the internal mounting post. Then solder the centre core.

3) Solder the outer shield of the cable to the back of the connector and fit the insulator and the end cap.

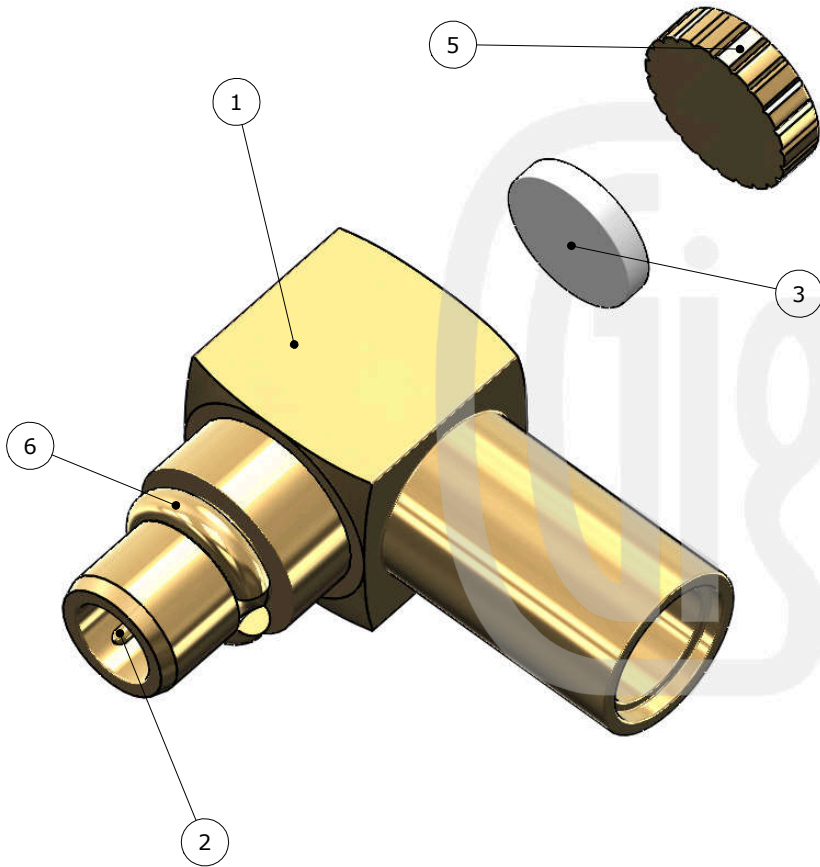


Strip Dimensions:

Semi Rigid - A=1.0mm, B=1.5mm  
 Conformable - A=1.0mm, B=1.5mm



Conformable FEP - A=6.5mm, B=1.0mm, C=1.5mm



Description	Material	Finish
6 Snap Ring	Beryllium Copper	Gold
5 End Cap	Brass	Gold
4 Insulator	PTFE	White
3 Dielectric	PTFE	White
2 Pin	Phosphor Bronze	Gold
1 Body	Brass	Gold

Unless otherwise specified tolerances  
 0.5-5 = ±0.2  
 >5-30 = ±0.4  
 >30-120 = ±0.6  
 >120-315 = ±1.0  
 >315-1000 = ±1.6  
 Angles = ±5°  
 Units = mm

This document is the confidential property of Gigatronix Limited and may not be copied, reproduced or transmitted to any third party without written authorisation.



**Part Number** MM17-0405-R01  
**Title:** MMCX Crimp Right Angle Plug, Gold Plated, RG405, .085 semi-rigid

<b>Author</b>	PJP
<b>Drawn by</b>	PJP
<b>Drawing date</b>	01/12/2022
<b>Checked by</b>	DB
<b>Checked date</b>	02/12/2022
<b>Scale</b>	Not to scale