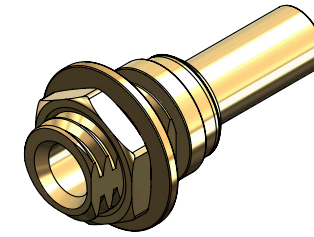


Revisions

Issue	Date	Note
1	21/06/2024	See note GTXPDC/956



1. Mechanical

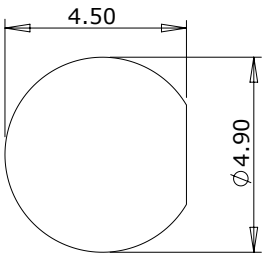
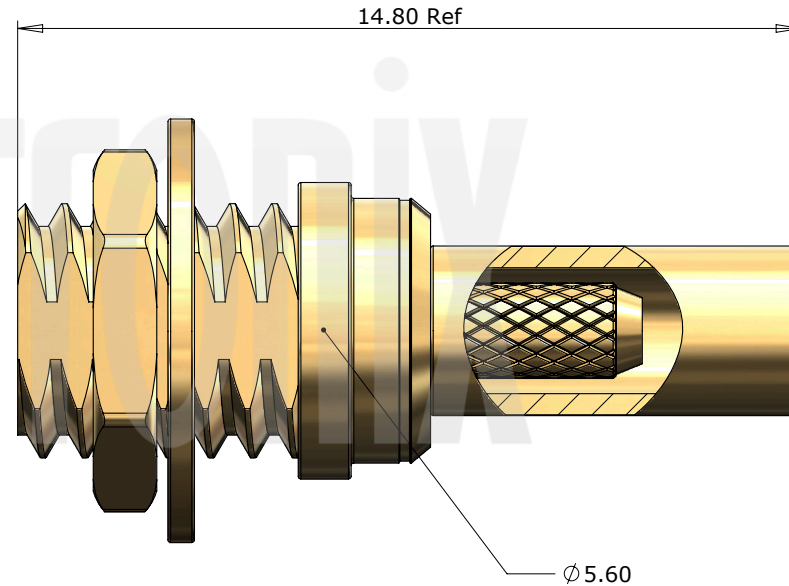
Cable Retention	Equal to breaking strain of cable
Durability	500 mating cycles
Lock Nut Torque	0.9 to 1.1Nm / 8-10 in-lbs
Contact Termination	Solder
Fixing Method	Crimp

2. Environmental

RoHS Compliant	Yes
Temperature Range	-65 to +165 degrees C

3. Electrical

Dielectric Withstanding	500 Volts RMS Maximum
Impedance	50 ohms
Interface Frequency	6 GHz
Working Voltage	170 Volts RMS Maximum



Panel Cut Out

Description	Material	Finish
6 Lock Nut	Brass	Gold
5 Washer	Brass	Gold
4 Ferrule	Brass	Gold
3 Dielectric	PTFE	White
2 Contact	Phosphor Bronze	Gold
1 Body	Brass	Gold

Unless otherwise specified tolerances
 0.5-5 = ±0.2
 >5-30 = ±0.4
 >30-120 = ±0.6
 >120-315 = ±1.0
 >315-1000 = ±1.6
 Angles = ±5°
 Units = mm

This document is the confidential property of Gigatronix Limited and may not be copied, reproduced or transmitted to any third party without written authorisation.



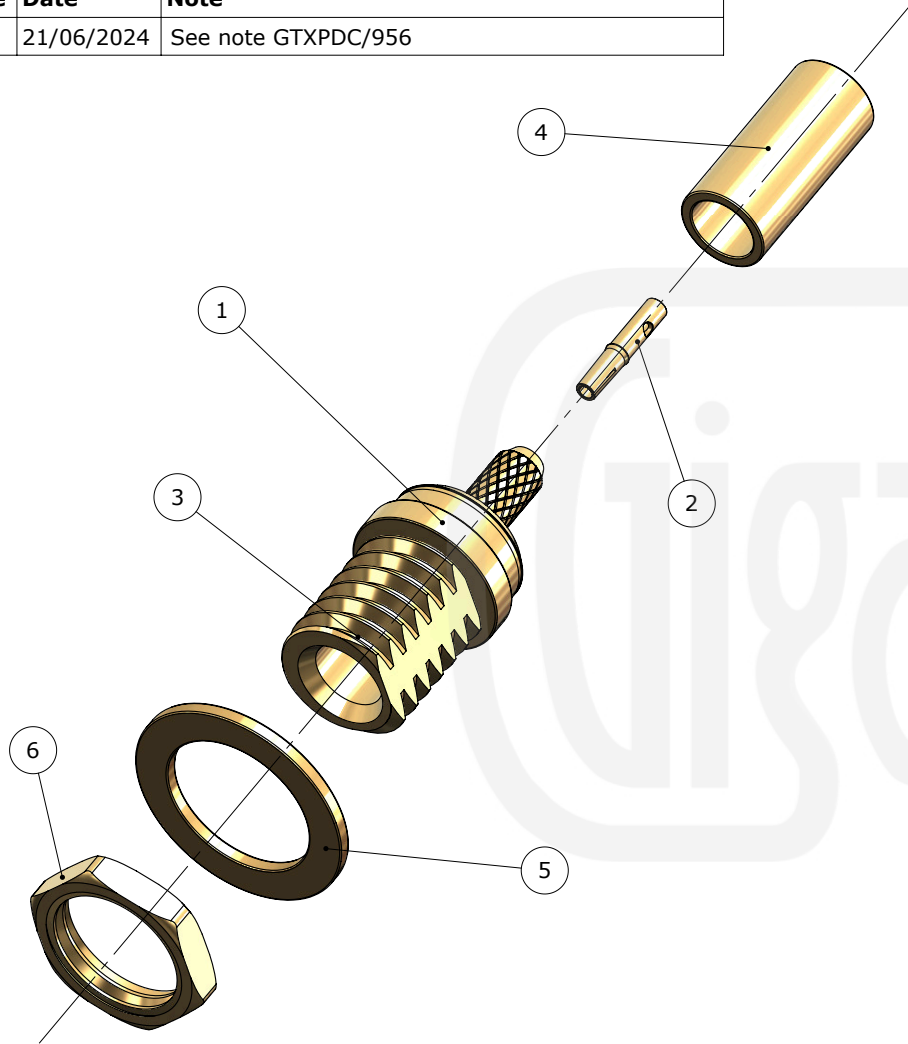
Author	PJP
Drawn by	PJP
Drawing date	21/06/2024
Checked by	DB
Checked date	21/06/2024
Scale	Not to scale

Part Number	MM02-0178-C01
Title:	MMCX Crimp Bulkhead Jack, Gold Plated, RG178

Revisions

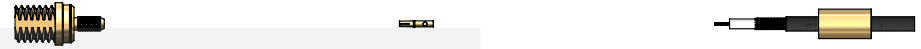
Issue	Date	Note
1	21/06/2024	See note GTXPDC/956

ASSEMBLY INSTRUCTIONS



Assembly Instructions

1) Slide the ferrule onto the cable and strip the cable to the dimensions as shown, taking care not to nick the centre conductor or braid.



2) Solder the contact onto the centre core and then slide the contact into the body until fully located, ensuring that the cable braid is on the outside of the connector mandril.

3) Slide the ferrule forward and crimp.



Crimp Die Sizes:
2.67mm Hex., Solder centre core

Strip Dimensions:
A=4.0mm, B=1.8mm, C=1.4mm



6	Lock Nut	Brass	Gold
5	Washer	Brass	Gold
4	Ferrule	Brass	Gold
3	Dielectric	PTFE	White
2	Contact	Phosphor Bronze	Gold
1	Body	Brass	Gold
	Description	Material	Finish

Unless otherwise specified tolerances
 0,5-5 = ±0,2
 >5-30 = ±0,4
 >30-120 = ±0,6
 >120-315 = ±1,0
 >315-1000 = ±1,6
 Angles = ±5°
 Units = mm

This document is the confidential property of Gigatronix Limited and may not be copied, reproduced or transmitted to any third party without written authorisation.



Author	PJP
Drawn by	PJP
Drawing date	21/06/2024
Checked by	DB
Checked date	21/06/2024
Scale	Not to scale

Part Number	MM02-0178-C01
Title:	MMCX Crimp Bulkhead Jack, Gold Plated, RG178