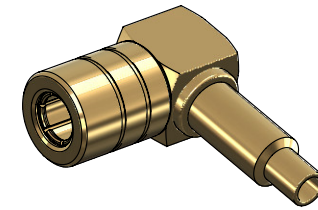


Revisions

Issue	Date	Note
2	25/10/2023	See GTCPCD/852

DATASHEET



1. Mechanical

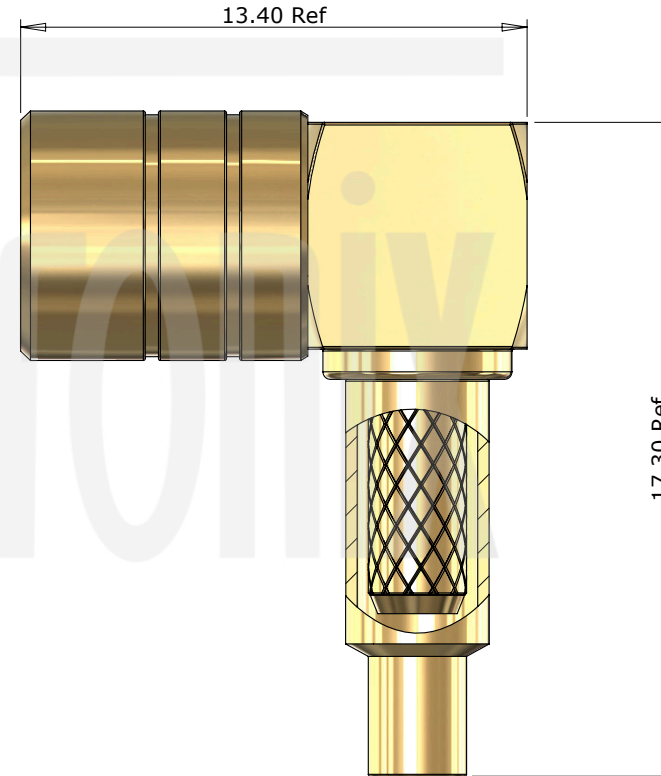
Cable Retention	Equal to breaking strain of cable
Durability	500 mating cycles
Contact Termination	Solder
Fixing Method	Crimp

2. Environmental

RoHS Compliant	Yes
Temperature Range	-65 to +165 degrees C

3. Electrical

Dielectric Withstanding	750 Volts RMS Maximum
Impedance	50 ohms
Interface Frequency	4 GHz
Working Voltage	335 Volts RMS Maximum



8	Insulator	PTFE	White
7	Tube	Brass	Nickel
6	Dielectric	PTFE	White
5	Insulator	ABS	White
4	End Cap	Brass	Gold
3	Ferrule	Brass	Gold
2	Contact	Beryllium Copper	Gold
1	Body	Brass	Gold
	Description	Material	Finish

Unless otherwise specified tolerances
 0.5-5 = ±0.2
 >5-30 = ±0.4
 >30-120 = ±0.6
 >120-315 = ±1.0
 >315-1000 = ±1.6
 Angles = ±5°
 Units = mm

This document is the confidential property of Gigatronix Limited and may not be copied, reproduced or transmitted to any third party without written authorisation.



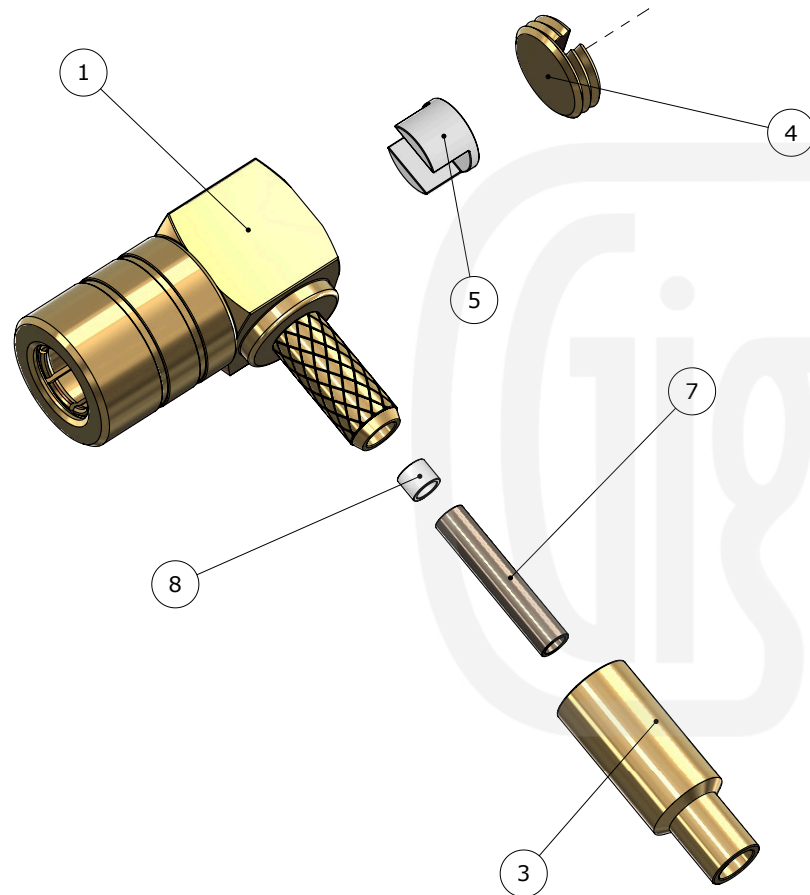
Author	PJP
Drawn by	PJP
Drawing date	26/04/2017
Checked by	GP
Checked date	27/04/2017
Scale	4 : 1

Part Number MB17-0178-C01

Title: SMB Crimp Right Angle Plug, Gold Plated, RG178

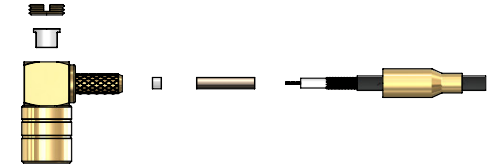
Revisions		
Issue	Date	Note
2	25/10/2023	See GTXPDC/852

ASSEMBLY INSTRUCTIONS

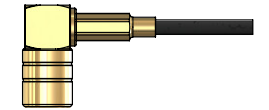


Assembly Instructions

1) Slide the ferrule onto the cable and strip the cable to the dimensions as shown, taking care not to nick the centre conductor or braid.



2) Slide the tube over the dielectric and under the cable braid. Slide the insulator over the centre core. Insert the cable into the body, ensuring that the cable braid is on the outside of the connector mandril and that the centre core locates in the internal mounting post.



3) Slide the ferrule forward and crimp. Solder the centre core of the cable to the mounting post and fit the insulator and end cap.

Crimp Die Sizes:

3.25mm Hex., Solder centre core

Strip Dimensions:

A=8.0mm, B=3.5mm, C=1.5mm



8	Insulator	PTFE	White
7	Tube	Brass	Nickel
6	Dielectric	PTFE	White
5	Insulator	ABS	White
4	End Cap	Brass	Gold
3	Ferrule	Brass	Gold
2	Contact	Beryllium Copper	Gold
1	Body	Brass	Gold
	Description	Material	Finish

Unless otherwise specified tolerances
 0.5-5 = ± 0.2
 >5-30 = ± 0.4
 >30-120 = ± 0.6
 >120-315 = ± 1.0
 >315-1000 = ± 1.6
 Angles = $\pm 5^\circ$
 Units = mm

This document is the confidential property of Gigatronix Limited and may not be copied, reproduced or transmitted to any third party without written authorisation.

Author	PJP
Drawn by	PJP
Drawing date	26/04/2017
Checked by	GP
Checked date	27/04/2017
Scale	Not to scale

Part Number MB17-0178-C01

Title: SMB Crimp Right Angle Plug, Gold Plated, RG178