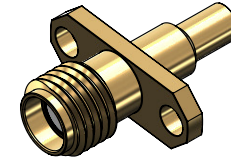


Revisions

Issue	Date	Note
2	09/08/2024	See note GTXPDC/987

DATASHEET



f Mechanical

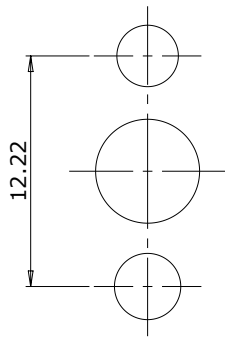
Cable Retention	Equal to breaking strain of cable
Durability	500 mating cycles
Fixing Method	Crimp / Solder
Contact Termination	Solder
Captive Contact	Yes

2. Environmental

RoHS Compliant	Yes
Temperature Range	-65 to +165 degrees C

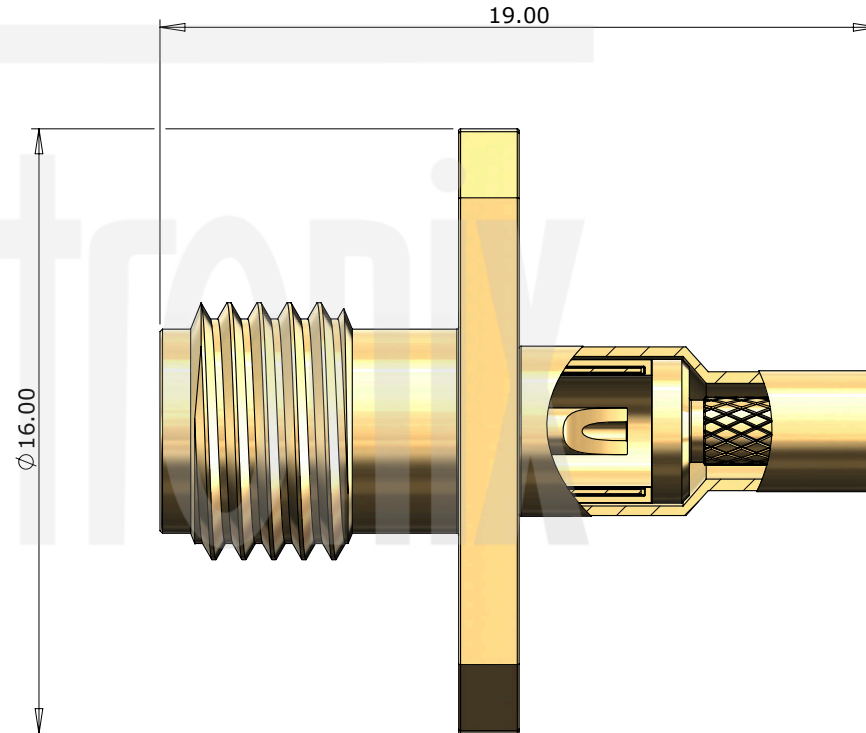
3. Electrical

Dielectric Withstanding	750 Volts RMS Maximum
Impedance	50 ohms
Interface Frequency	12.4 GHz
Working Voltage	335 Volts RMS Maximum



Panel Holes
2 x 2.60mm
1 x 5.50mm

Panel Cut Out



Unless otherwise specified tolerances
0.5-5 = ±0.2
>5-30 = ±0.4
>30-120 = ±0.6
>120-315 = ±1.0
>315-1000 = ±1.6
Angles = ±5°
Units = mm

This document is the confidential property of Gigatronix Limited and may not be copied, reproduced or transmitted to any third party without written authorisation.



Author	PJP
Drawn by	PJP
Drawing date	02/07/2024
Checked by	DB
Checked date	3/07/2024
Scale	Not to scale

Part Number MA36-0178-C01
Title: SMA Flange Jack, 2 Hole, Brass, Gold Plated, RG178

Description	Material	Finish
5 Cover	Brass	Gold
4 Ferrule	Brass	Gold
3 Dielectric	PTFE	White
2 Contact	Beryllium Copper	Gold
1 Body	Brass	GOLD

Revisions

Issue	Date	Note
2	09/08/2024	See note GTXPDC/987

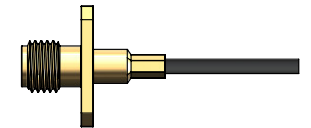
ASSEMBLY INSTRUCTIONS

Assembly Instructions:

1) Slide the ferrule onto the cable and strip the cable to the dimensions as shown, taking care not to nick the centre conductor or braid



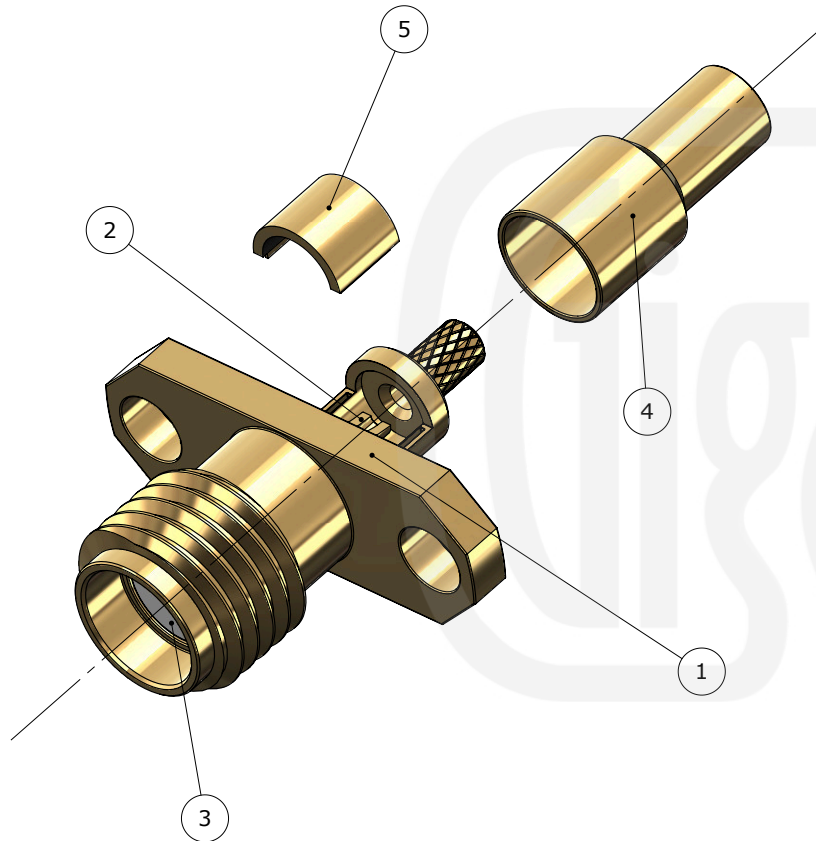
2) Slide the cable into the body, ensuring that the cable braid is on the outside of the connector mandril and that the centre conductor is fully located in the contact. Solder the centre conductor on to the contact and fit the cover.



3) Slide the ferrule forward and crimp

Crimp Die Sizes:
2.67mm Hex., Solder Centre Core

Strip Dimensions:
A=2.6mm, B=1.7mm, C=2.0mm



Description	Material	Finish
5 Cover	Brass	Gold
4 Ferrule	Brass	Gold
3 Dielectric	PTFE	White
2 Contact	Beryllium Copper	Gold
1 Body	Brass	GOLD

Unless otherwise specified tolerances
 0.5-5 = ±0.2
 >5-30 = ±0.4
 >30-120 = ±0.6
 >120-315 = ±1.0
 >315-1000 = ±1.6
 Angles = ±5°
 Units = mm

This document is the confidential property of Gigatronix Limited and may not be copied, reproduced or transmitted to any third party without written authorisation.



Author	PJP
Drawn by	PJP
Drawing date	02/07/2024
Checked by	DB
Checked date	3/07/2024
Scale	Not to scale

Part Number MA36-0178-C01

Title: SMA Flange Jack, 2 Hole, Brass, Gold Plated, RG178