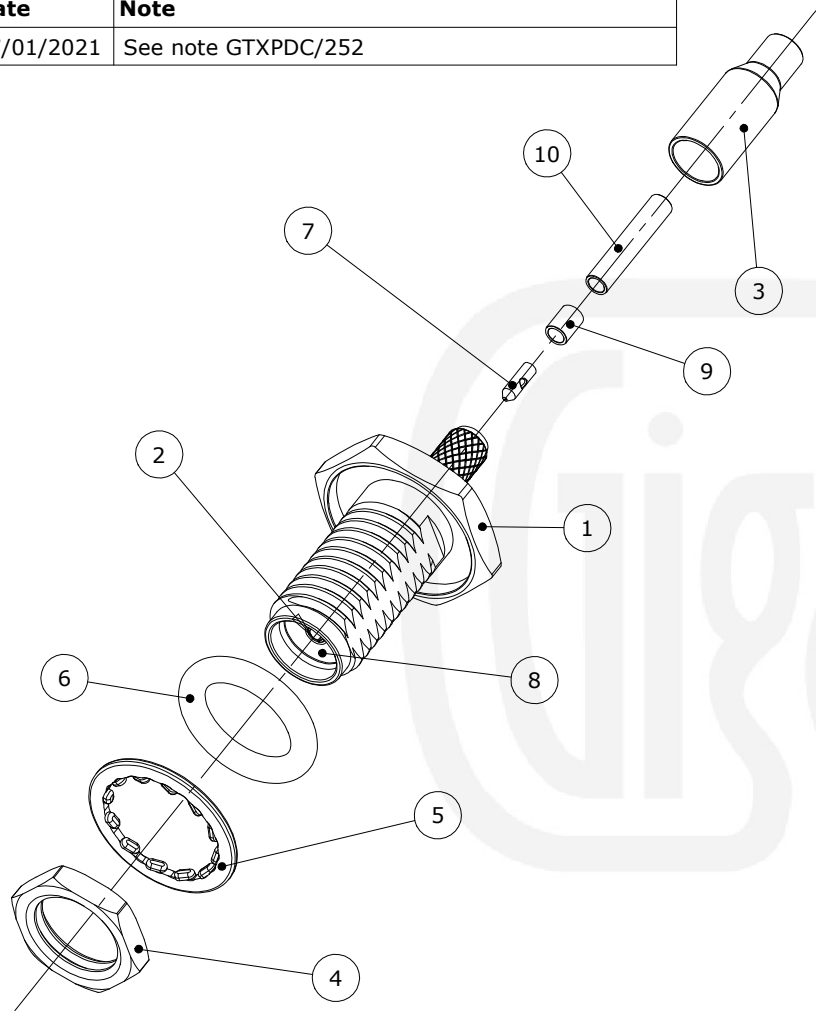


**Revisions**

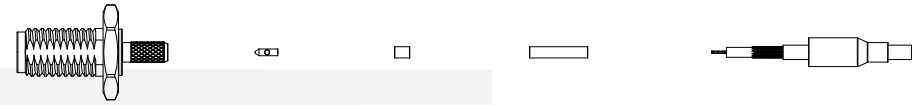
Issue	Date	Note
1	27/01/2021	See note GTXPDC/252

**ASSEMBLY VIEW**



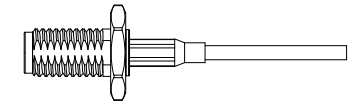
**Assembly Instructions:**

1) Slide the ferrule onto the cable and strip the cable to the dimensions as shown, taking care not to nick the centre conductor or braid



2) Slide the tube onto the cable and under the braid, then slide the insulator onto the cable. Solder the pin onto the centre conductor and slide the pin into the body, ensuring that the cable braid is on the outside of the connector mandril and that the centre pin is captivated.

3) Slide the ferrule forward and crimp

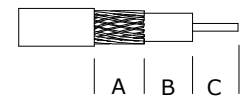


**Crimp Hex. Sizes:**

3.25mm Hex, Solder centre core

**Strip Dimensions:**

A=9.0mm, B=1.0mm, C=2.5mm



10	Tube	Brass	Nickel
9	Insulator	PTFE	White
8	Dielectric	PTFE	White
7	Pin	Brass	Gold
6	O Ring	Silicone	Black
5	Washer	Stainless Steel	Passivated
4	Locknut	Stainless Steel	Passivated
3	Ferrule	Brass	Nickel
2	Contact	Beryllium Copper	Gold
1	Body	Stainless Steel	Passivated
	<b>Description</b>	<b>Material</b>	<b>Finish</b>

Unless otherwise specified tolerances  
 0.5-5 = ±0.2  
 >5-30 = ±0.4  
 >30-120 = ±0.6  
 >120-315 = ±1.0  
 >315-1000 = ±1.6  
 Angles = ±5°  
 Units = mm

This document is the confidential property of Gigatronix Limited and may not be copied, reproduced or transmitted to any third party without written authorisation.



<b>Author</b>	PJP
<b>Drawn by</b>	PJP
<b>Drawing date</b>	27/01/2021
<b>Checked by</b>	DB
<b>Checked date</b>	28/01/2021
<b>Scale</b>	Not to scale

**Part Number** MA02-0178-C04WP  
**Title:** SMA Waterproof Crimp Bulkhead Jack, IP68, Passivated Stainless Steel, RG178