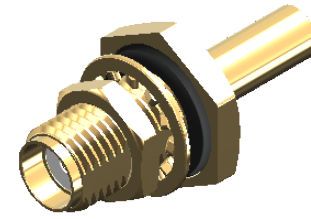


Revisions

Issue	Date	Note
2	01/03/2023	See GTXPDC/684 - checked DB 01/03/2023



1. Mechanical

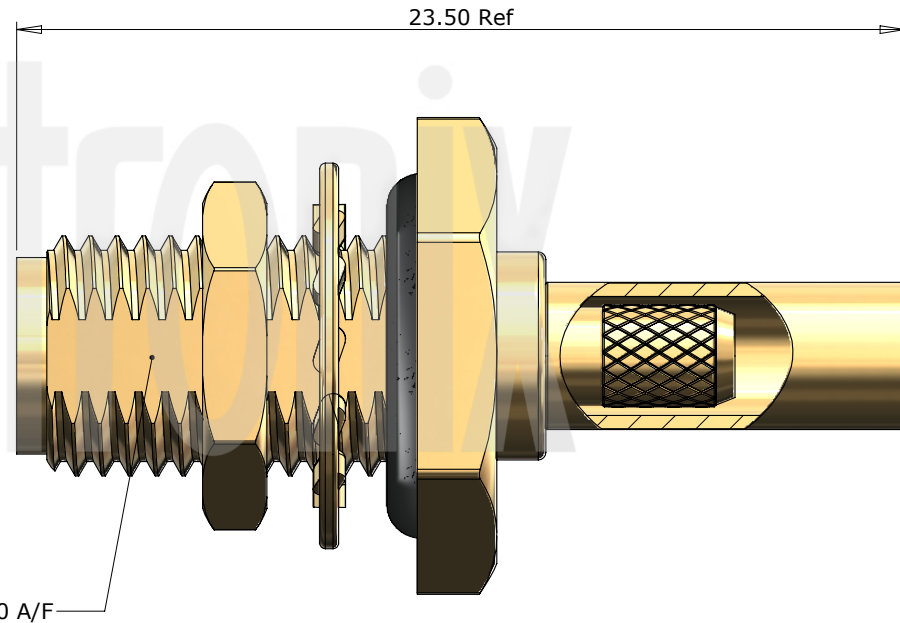
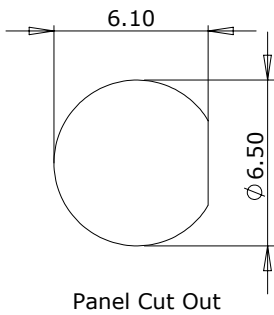
Cable Retention	Equal to breaking strain of cable
Durability	500 mating cycles
Lock Nut Torque	0.9 to 1.1Nm / 8-10 in-lbs
Contact Termination	Solder

2. Environmental

RoHS Compliant	Yes
Temperature Range	-65 to +165 degrees C

3. Electrical

Dielectric Withstanding	750 Volts RMS Maximum
Impedance	50 ohms
Interface Frequency	12.4 GHz
Working Voltage	335 Volts RMS Maximum



Issue	Description	Material	Finish
7	Locknut	Brass	Gold
6	Washer	Brass	Gold
5	O Ring	Silicone Rubber	Black
4	Ferrule	Brass	Gold
3	Dielectric	PTFE	White
2	Contact	Beryllium Copper	Gold
1	Body	Brass	Gold

Unless otherwise specified tolerances
 0.5-5 = ±0.2
 >5-30 = ±0.4
 >30-120 = ±0.6
 >120-315 = ±1.0
 >315-1000 = ±1.6
 Angles = ±5°
 Units = mm

This document is the confidential property of Gigatronix Limited and may not be copied, reproduced or transmitted to any third party without written authorisation.



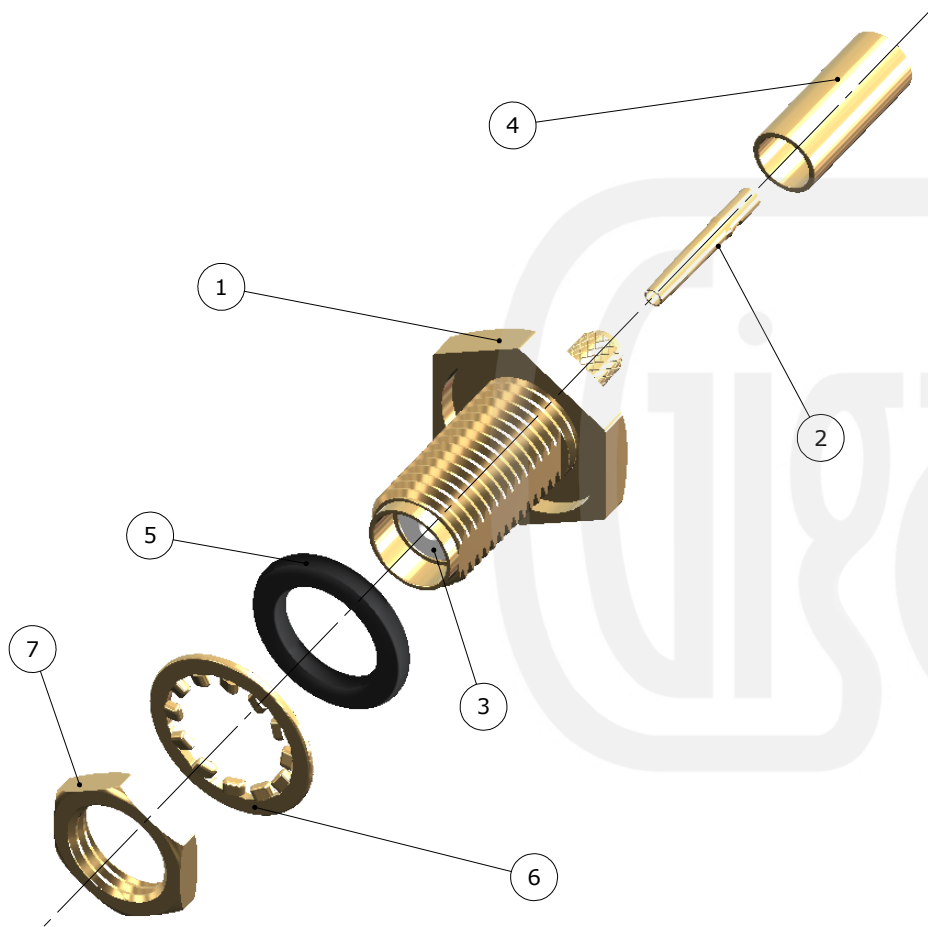
Author	PJP
Drawn by	PJP
Drawing date	28/08/2014
Checked by	CBB
Checked date	29/08/2014
Scale	Not to scale

Part Number	MA02-0174-C01
Title:	SMA Crimp Bulkhead Jack, Gold Plated, RG174, LBC100, RG316

Revisions

Issue	Date	Note
2	01/03/2023	See GTXPDC/684 - checked DB 01/03/2023

ASSEMBLY INSTRUCTIONS



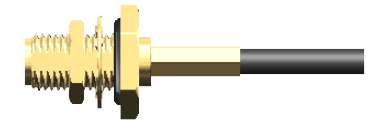
Assembly Instructions:

1) Slide the ferrule onto the cable and strip the cable to the dimensions as shown, taking care not to nick the centre conductor or braid



2) Solder the contact onto the centre core and slide the contact into the body until it captivates, ensuring that the cable braid is on the outside of the connector mandril

3) Slide the ferrule forward and crimp



Crimp Die Sizes:

3.25mm Hex., Solder centre core

Strip Dimensions:

A=7.0mm, B=2.5mm, C=2.5mm



7	Locknut	Brass	Gold
6	Washer	Brass	Gold
5	O Ring	Silicone Rubber	Black
4	Ferrule	Brass	Gold
3	Dielectric	PTFE	White
2	Contact	Beryllium Copper	Gold
1	Body	Brass	Gold
	Description	Material	Finish

Unless otherwise specified tolerances
 0.5-5 = ±0.2
 >5-30 = ±0.4
 >30-120 = ±0.6
 >120-315 = ±1.0
 >315-1000 = ±1.6
 Angles = ±5°
 Units = mm

This document is the confidential property of Gigatronix Limited and may not be copied, reproduced or transmitted to any third party without written authorisation.



Author	PJP
Drawn by	PJP
Drawing date	28/08/2014
Checked by	CBB
Checked date	29/08/2014
Scale	Not to scale

Part Number MA02-0174-C01

Title: SMA Crimp Bulkhead Jack, Gold Plated, RG174, LBC100, RG316