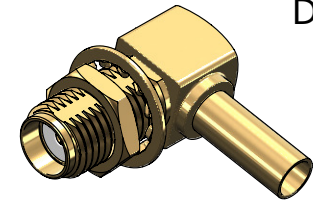


Revisions

Issue	Date	Note
1	07/02/2024	See note GTXPDC/907

DATASHEET



1. Mechanical

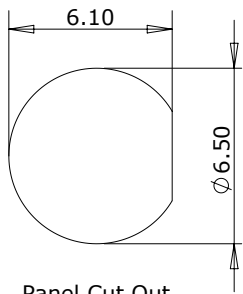
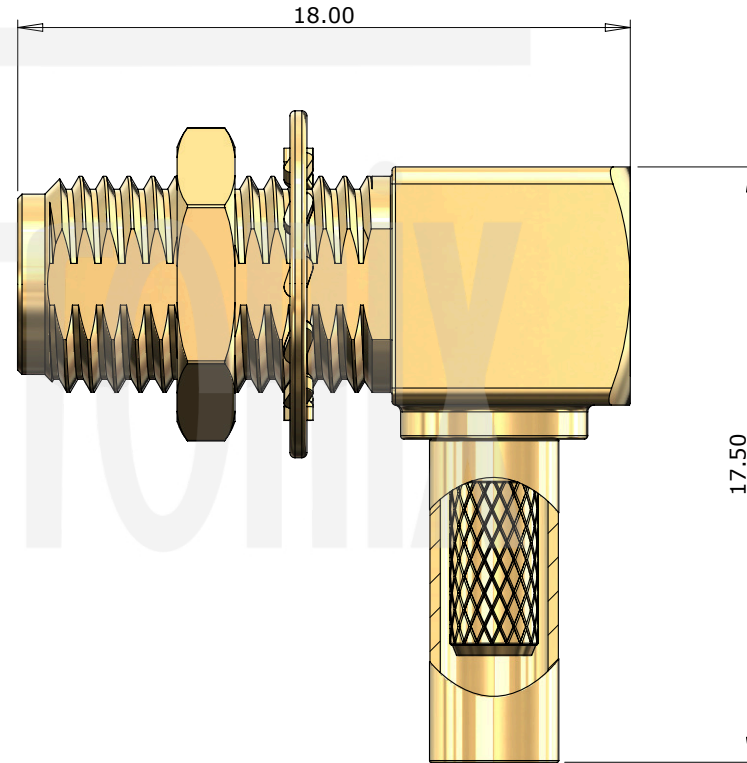
Cable Retention	Equal to breaking strain of cable
Durability	500 mating cycles
Fixing Method	Crimp
Contact Termination	Solder

2. Environmental

RoHS Compliant	Yes
Temperature Range	-65 to +165 degrees C

3. Electrical

Dielectric Withstanding	750 Volts RMS Maximum
Impedance	50 ohms
Interface Frequency	12.4 GHz
Working Voltage	335 Volts RMS Maximum



Panel Cut Out

7	End Cap	Brass	Gold
6	Washer	Phosphor Bronze	Gold
5	Lock Nut	Brass	Gold
4	Ferrule	Brass	Gold
3	Dielectric	PTFE	White
2	Contact	Beryllium Copper	Gold
1	Body	Brass	Nickel
	Description	Material	Finish

Unless otherwise specified tolerances
 0.5-5 = ±0.2
 >5-30 = ±0.4
 >30-120 = ±0.6
 >120-315 = ±1.0
 >315-1000 = ±1.6
 Angles = ±5°
 Units = mm

This document is the confidential property of Gigatronix Limited and may not be copied, reproduced or transmitted to any third party without written authorisation.



Author	PJP
Drawn by	PJP
Drawing date	07/02/2024
Checked by	DB
Checked date	07/02/2024
Scale	Not to scale

Part Number MA02-0174-C01-17
Title: SMA Crimp Right Angle Bulkhead Jack, Gold Plated, RG174, LBC100, RG316

Revisions		
Issue	Date	Note
1	07/02/2024	See note GTXPDC/907

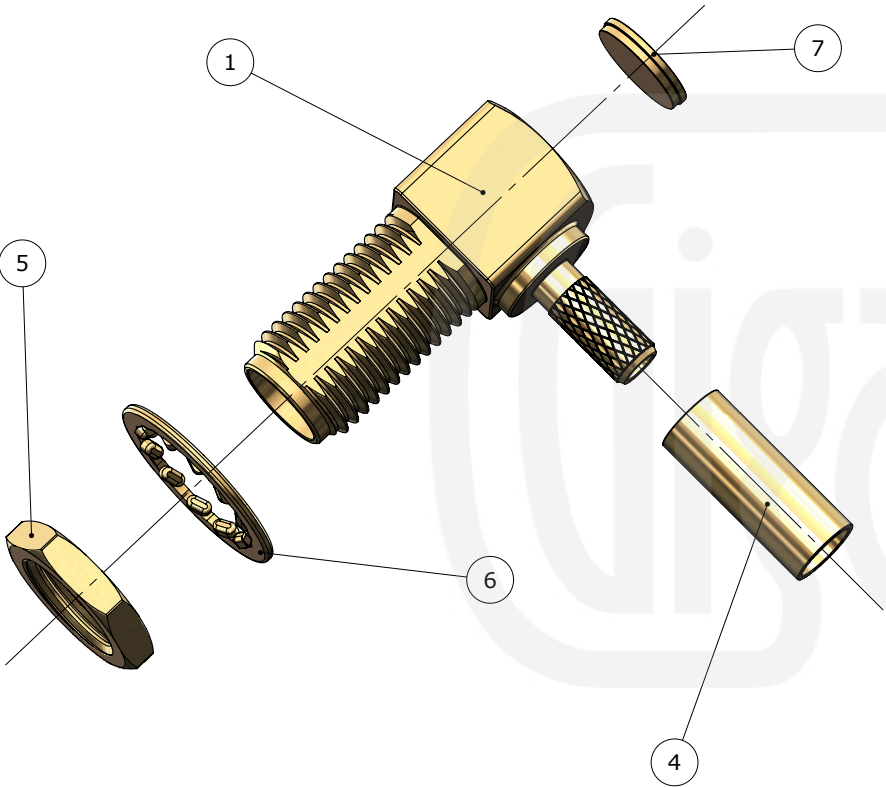
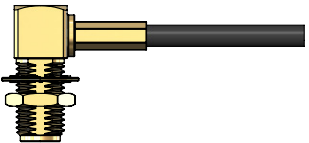
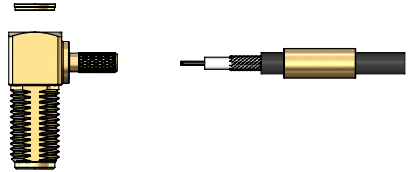
ASSEMBLY INSTRUCTIONS

Assembly Instructions

1) Slide the ferrule onto the cable and strip the cable to the dimensions as shown, taking care not to nick the centre conductor or braid.

2) Insert the cable into the body, ensuring that the cable braid is on the outside of the connector mandril and that the centre core locates in the internal mounting post.

3) Slide the ferrule forward and crimp. Solder the centre core of the cable to the mounting post and fit the end cap.



Crimp Die Sizes:
3.25mm Hex., Solder centre core

Strip Dimensions:
A=6.3mm, B=3.9mm, C=1.8mm



Description	Material	Finish
7 End Cap	Brass	Gold
6 Washer	Phosphor Bronze	Gold
5 Lock Nut	Brass	Gold
4 Ferrule	Brass	Gold
3 Dielectric	PTFE	White
2 Contact	Beryllium Copper	Gold
1 Body	Brass	Nickel

Unless otherwise specified tolerances
 0.5-5 = ±0.2
 >5-30 = ±0.4
 >30-120 = ±0.6
 >120-315 = ±1.0
 >315-1000 = ±1.6
 Angles = ±5°
 Units = mm

This document is the confidential property of Gigatronix Limited and may not be copied, reproduced or transmitted to any third party without written authorisation.



Author	PJP
Drawn by	PJP
Drawing date	07/02/2024
Checked by	DB
Checked date	07/02/2024
Scale	Not to scale

Part Number MA02-0174-C01-17
Title: SMA Crimp Right Angle Bulkhead Jack, Gold Plated, RG174, LBC100, RG316