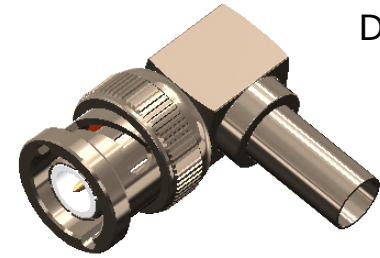


**Revisions**

Issue	Date	Note
1	19/07/2022	See note GTXPDC/543

**DATASHEET**



**1. Mechanical**

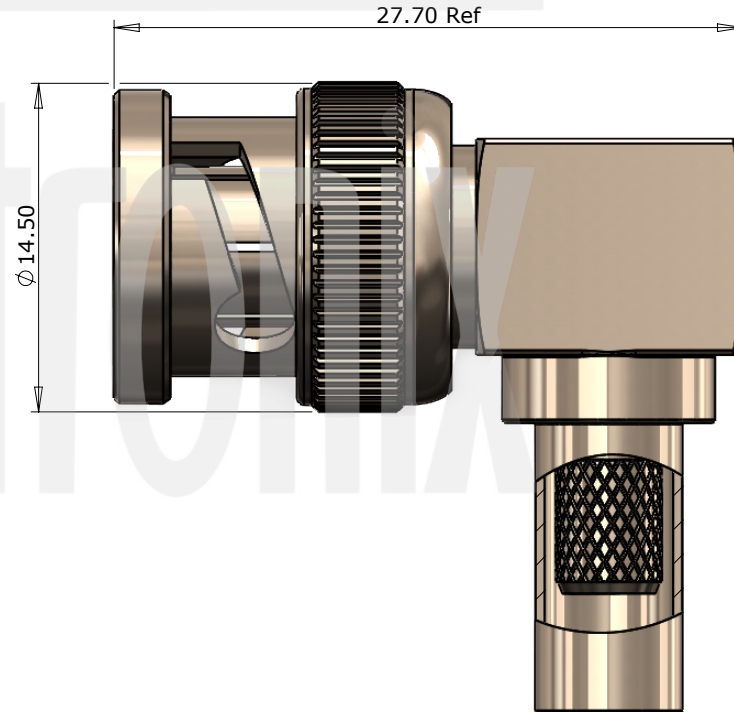
Cable Retention	Equal to breaking strain of cable
Durability	500 mating cycles
Fixing Method	Crimp

**2. Environmental**

RoHS Compliant	Yes
Temperature Range	-55 to +85 degrees C

**3. Electrical**

Dielectric Withstanding	1500 Volts RMS Maximum
Impedance	50 ohms
Interface Frequency	4 GHz
Working Voltage	500 Volts RMS Maximum



Description	Material	Finish
7 Insulator	Polypropylene	White
6 End Cap	Brass	Nickel
5 Ferrule	Brass	Nickel
4 Dielectric	PTFE	White
3 Pin	Brass	Gold
2 Coupling Nut	Brass	Nickel
1 Body	Brass	Nickel

Unless otherwise specified tolerances  
 0.5-5 = ±0.2  
 >5-30 = ±0.4  
 >30-120 = ±0.6  
 >120-315 = ±1.0  
 >315-1000 = ±1.6  
 Angles = ±5°  
 Units = mm

This document is the confidential property of Gigatronix Limited and may not be copied, reproduced or transmitted to any third party without written authorisation.

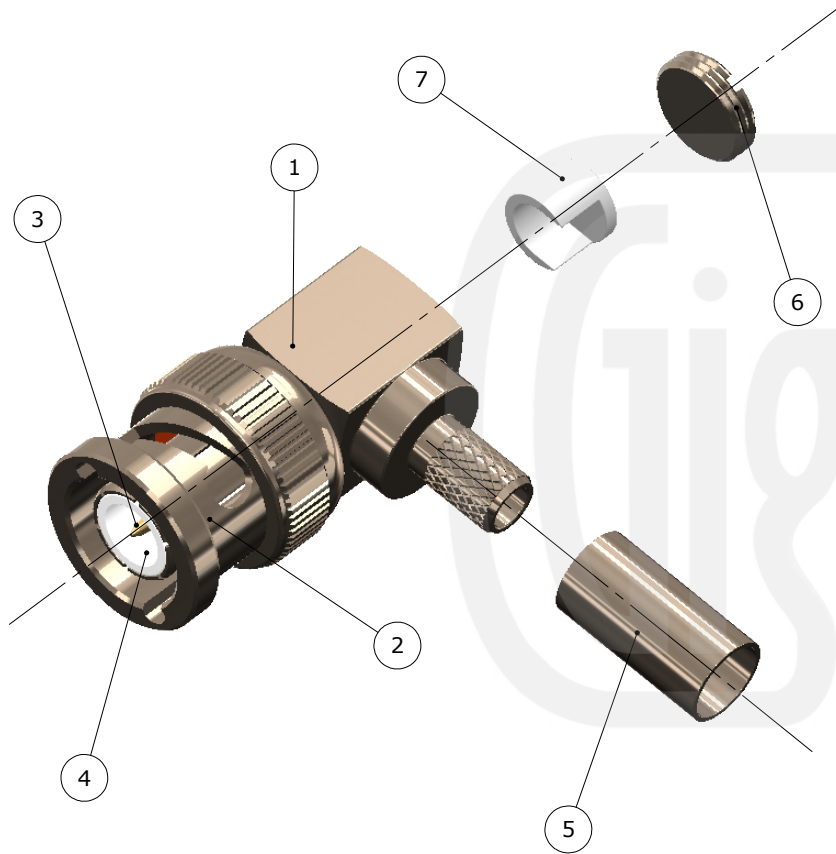


<b>Author</b>	PJP
<b>Drawn by</b>	PJP
<b>Drawing date</b>	19/07/2022
<b>Checked by</b>	DB
<b>Checked date</b>	19/07/2022
<b>Scale</b>	Not to scale

**Part Number** BN17-0400-C06  
**Title:** BNC Crimp Right Angle Plug, Nickel Plated, PTFE Dielectric, RG142, RG223, RG400

**Revisions**

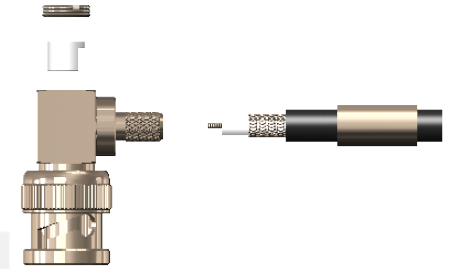
Issue	Date	Note
1	19/07/2022	See note GTXPDC/543



**ASSEMBLY INSTRUCTIONS**

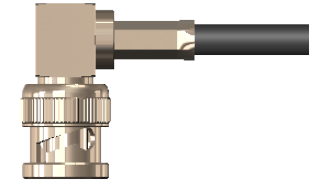
**Assembly Instructions:**

1) Slide the ferrule onto the cable and strip the cable to the dimensions as shown, taking care not to nick the centre conductor or braid



2) Insert the cable into the body, ensuring that the cable braid is on the outside of the connector mandril and that the centre core locates in the internal mounting post

3) Slide the ferrule forward and crimp. Solder the centre core of the cable to the mounting post and fit the insulator and end cap

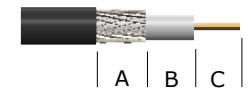


**Crimp Die Sizes:**

5.41mm Hex., Solder centre core

**Strip Dimensions:**

A=7.5mm, B=6.0mm, C=3.0mm



7	Insulator	Polypropylene	White
6	End Cap	Brass	Nickel
5	Ferrule	Brass	Nickel
4	Dielectric	PTFE	White
3	Pin	Brass	Gold
2	Coupling Nut	Brass	Nickel
1	Body	Brass	Nickel
	<b>Description</b>	<b>Material</b>	<b>Finish</b>

Unless otherwise specified tolerances  
 0.5-5 = ±0.2  
 >5-30 = ±0.4  
 >30-120 = ±0.6  
 >120-315 = ±1.0  
 >315-1000 = ±1.6  
 Angles = ±5°  
 Units = mm

This document is the confidential property of Gigatronix Limited and may not be copied, reproduced or transmitted to any third party without written authorisation.



**Part Number** BN17-0400-C06

**Title:** BNC Crimp Right Angle Plug, Nickel Plated, PTFE Dielectric, RG142, RG223, RG400

<b>Author</b>	PJP
<b>Drawn by</b>	PJP
<b>Drawing date</b>	19/07/2022
<b>Checked by</b>	DB
<b>Checked date</b>	19/07/2022
<b>Scale</b>	Not to scale