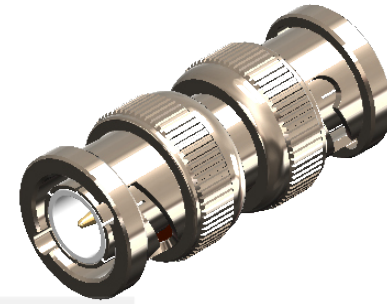


Revisions

Issue	Date	Note
1	25/01/2023	See note GTXPDC/647

DATASHEET

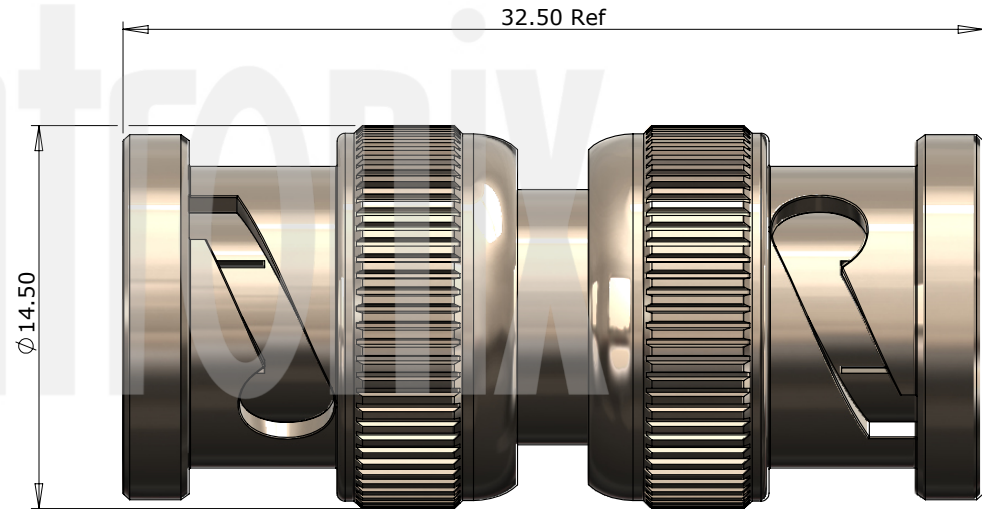


1. Environmental

RoHS Compliant Yes
 Temperature Range -55 to +85 degrees C

2. Electrical

Dielectric Withstanding 1500 Volts RMS Maximum
 Impedance 50 ohms
 Interface Frequency 4 GHz
 Working Voltage 500 Volts RMS Maximum



4	Dielectric	Delrin	White
3	Pin	Brass	Gold
2	Coupling Nut	Brass	Nickel
1	Body	Brass	Nickel
	Description	Material	Finish

Unless otherwise specified tolerances
 0.5-5 = ± 0.2
 >5-30 = ± 0.4
 >30-120 = ± 0.6
 >120-315 = ± 1.0
 >315-1000 = ± 1.6
 Angles = $\pm 5^\circ$
 Units = mm

This document is the confidential property of Gigatronix Limited and may not be copied, reproduced or transmitted to any third party without written authorisation.



Author	PJP
Drawn by	PJP
Drawing date	25/01/2023
Checked by	DB
Checked date	26/01/2023
Scale	Not to scale

Part Number	BN15-15-A06
Title: BNC Plug to Plug Adaptor, Nickel Plated, 50 ohms	