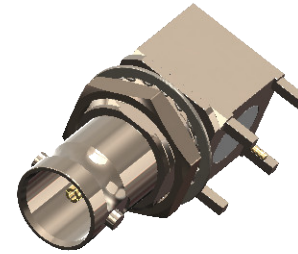


Revisions

Issue	Date	Note
2	29/05/2024	See GTXPDC/940



1. Mechanical

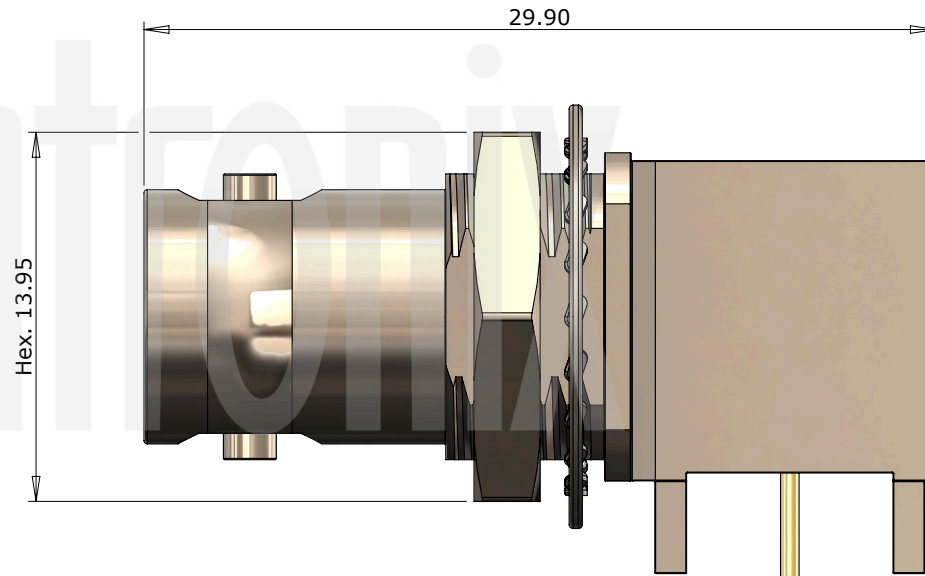
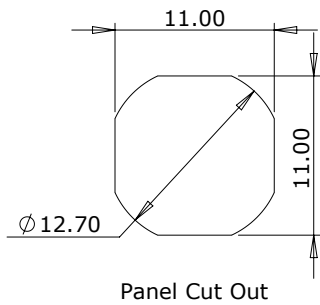
Fixing Method	PCB
Durability	500 mating cycles
Lock Nut Torque	4.0 - 4.5Nm (35-40 in-lbs)

2. Environmental

RoHS Compliant	Yes
Temperature Range	-65 to +165 degrees C

3. Electrical


Dielectric Withstanding	1500 Volts RMS Maximum
Impedance	75 ohms
Interface Frequency	12 GHz
Working Voltage	500 Volts RMS Maximum



Description	Material	Finish
5 Washer	F.E.	Nickel
4 Lock Nut	Brass	Nickel
3 Dielectric	PTFE	White
2 Contact	Phosphor Bronze	Gold
1 Body	Brass	Nickel

Unless otherwise specified tolerances
 0.5-5 = ±0.2
 >5-30 = ±0.4
 >30-120 = ±0.6
 >120-315 = ±1.0
 >315-1000 = ±1.6
 Angles = ±5°
 Units = mm

This document is the confidential property of Gigatronix Limited and may not be copied, reproduced or transmitted to any third party without written authorisation.



Part Number BN02-X600-N06-Z-18
Title: BNC 12G SDI Right Angle PCB Mount Bulkhead Jack, Nickel Plated, PTFE Dielectric, 75 ohms, Hex. Nut

Author	PJP
Drawn by	PJP
Drawing date	10/08/2022
Checked by	DB
Checked date	10/08/2022
Scale	Not to scale