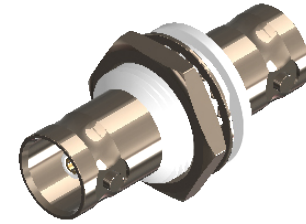


**Revisions**

Issue	Date	Note
2	24/03/2022	See note GTXPDC/452 - checked DB 25/3/2022



**1. Mechanical**

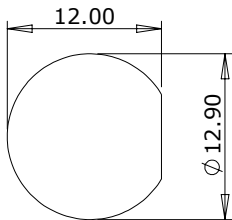
Fixing Method                      Panel  
 Durability                            500 mating cycles

**2. Environmental**

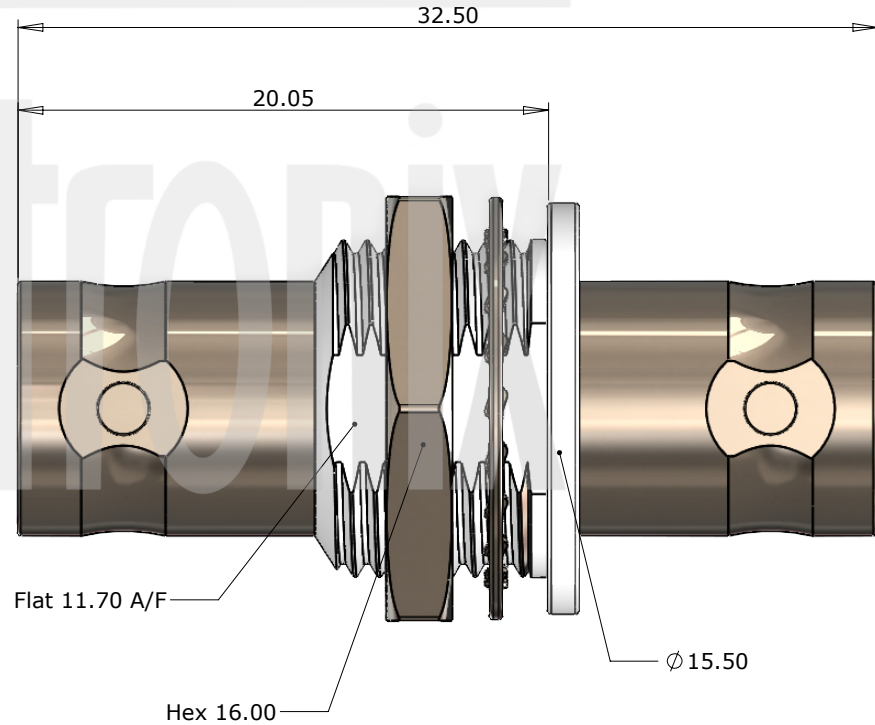
RoHS Compliant                    Yes  
 Temperature Range                -55 to +85 degrees C

**3. Electrical**

Dielectric Withstanding            1500 Volts RMS Maximum  
 Impedance                            75 ohms  
 Interface Frequency                1 GHz  
 Working Voltage                    500 Volts RMS Maximum



Panel Cut Out



Description	Material	Finish
6 Insulator	Delrin	White
5 Washer	SS41	Nickel
4 Lock Nut	Brass	Nickel
3 Dielectric	Delrin	White
2 Contact	Phosphor Bronze	Gold
1 Body	Brass	Nickel

Unless otherwise specified tolerances  
 0.5-5 = ±0.2  
 >5-30 = ±0.4  
 >30-120 = ±0.6  
 >120-315 = ±1.0  
 >315-1000 = ±1.6  
 Angles = ±5°  
 Units = mm

This document is the confidential property of Gigatronix Limited and may not be copied, reproduced or transmitted to any third party without written authorisation.



<b>Author</b>	PJP
<b>Drawn by</b>	PJP
<b>Drawing date</b>	23/06/2020
<b>Checked by</b>	SM
<b>Checked date</b>	23/06/2020
<b>Scale</b>	Not to scale

**Part Number** BN02-10-D06-1  
**Title:** BNC Bulkhead Jack to Jack Adaptor, Nickel Plated, Isolated Body, 75 ohms