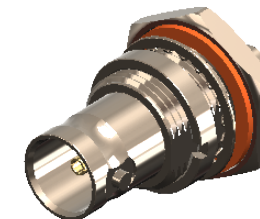


**Revisions**

Issue	Date	Note
3	24/10/2022	See GTXPDC/596 - checked DB 27/10/2022

**DATASHEET**



**1. Mechanical**

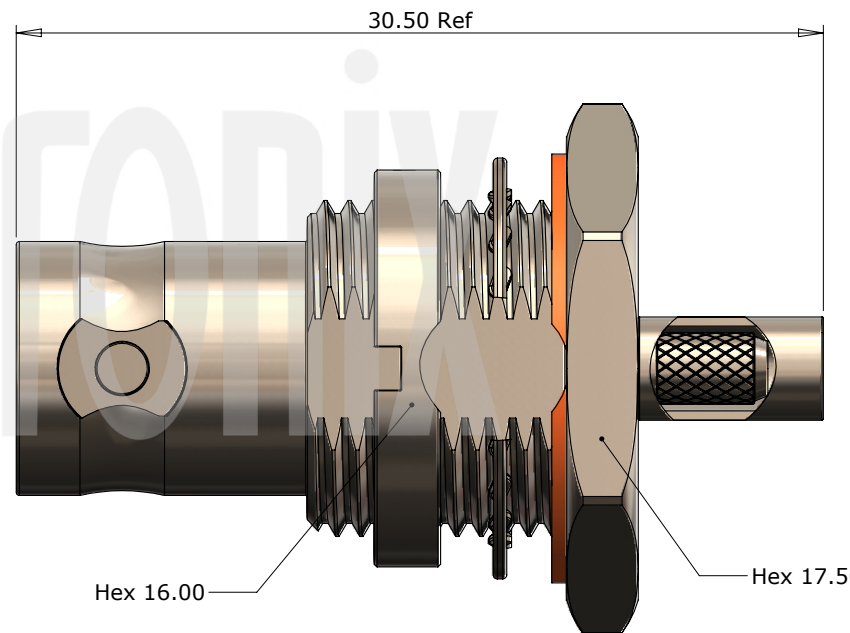
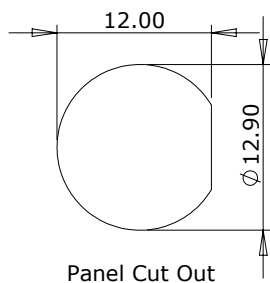
Cable Retention	Equal to breaking strain of cable
Durability	500 mating cycles
Lock Nut Torque	4.0 - 4.5Nm (35-40 in-lbs)

**2. Environmental**

RoHS Compliant	Yes
Temperature Range	-65 to +165 degrees C

**3. Electrical**

Dielectric Withstanding	1500 Volts RMS Maximum
Impedance	75 ohms
Interface Frequency	12 GHz
Working Voltage	500 Volts RMS Maximum



8	Washer	FE	Nickel
7	Lock Nut	Brass	Nickel
6	Gasket	Rubber	Red
5	Ferrule	Brass	Nickel
4	Dielectric	PTFE	White
3	Pin	Brass	Gold
2	Integral Contact	Beryllium Copper	Gold
1	Body	Brass	Nickel
	<b>Description</b>	<b>Material</b>	<b>Finish</b>

Unless otherwise specified tolerances  
 0.5-5 = ±0.2  
 >5-30 = ±0.4  
 >30-120 = ±0.6  
 >120-315 = ±1.0  
 >315-1000 = ±1.6  
 Angles = ±5°  
 Units = mm

This document is the confidential property of Gigatronix Limited and may not be copied, reproduced or transmitted to any third party without written authorisation.



<b>Author</b>	PJP
<b>Drawn by</b>	PJP
<b>Drawing date</b>	28/09/2020
<b>Checked by</b>	SM
<b>Checked date</b>	06/10/2020
<b>Scale</b>	Not to scale

<b>Part Number</b>	BN02-017C-C06-Z
<b>Title:</b>	BNC 12G SDI Crimp Bulkhead Jack, Hex Flange, Circular Locknut, Belden RG179DT, RG179B/U

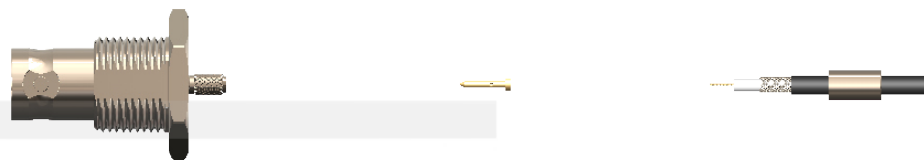
Revisions

Issue	Date	Note
3	24/10/2022	See GTXPDC/596 - checked DB 27/10/2022

ASSEMBLY INSTRUCTIONS

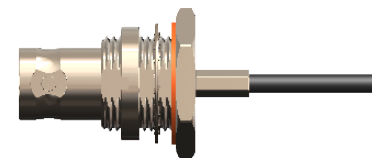
Assembly Instructions

1) Slide the ferrule onto the cable and strip the cable to the dimensions as shown, taking care not to nick the centre conductor or braid.



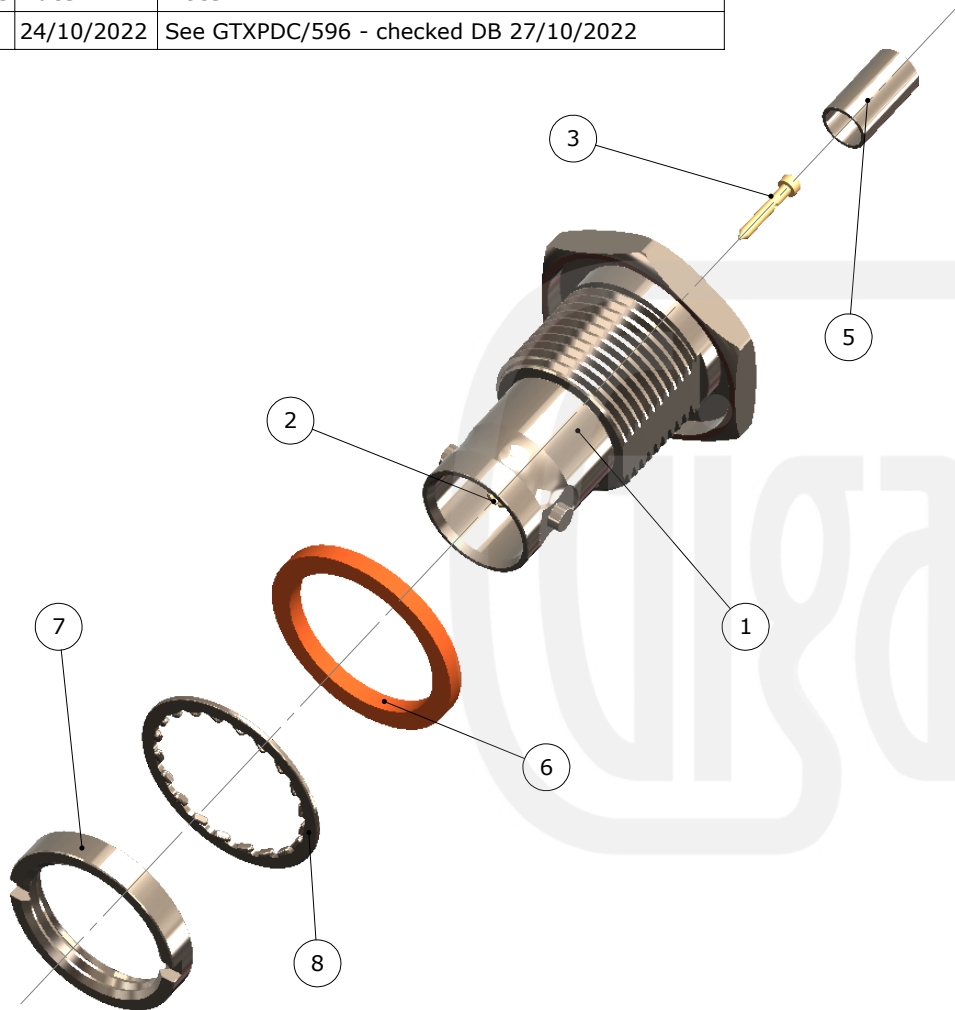
2) Crimp the pin onto the centre core and slide the pin into the body until it is fully located within the integral contact, ensuring that the cable braid is on the outside of the connector mandril.

3) Slide the ferrule forward and crimp.



**Crimp Die Sizes:**  
3.25mm Hex., 0.72mm sq.

**Strip Dimensions:**  
A=5.1mm, B=2.7mm, C=3.0mm



8	Washer	FE	Nickel
7	Lock Nut	Brass	Nickel
6	Gasket	Rubber	Red
5	Ferrule	Brass	Nickel
4	Dielectric	PTFE	White
3	Pin	Brass	Gold
2	Integral Contact	Beryllium Copper	Gold
1	Body	Brass	Nickel
	<b>Description</b>	<b>Material</b>	<b>Finish</b>

Unless otherwise specified tolerances  
 0.5-5 = ±0.2  
 >5-30 = ±0.4  
 >30-120 = ±0.6  
 >120-315 = ±1.0  
 >315-1000 = ±1.6  
 Angles = ±5°  
 Units = mm

This document is the confidential property of Gigatronix Limited and may not be copied, reproduced or transmitted to any third party without written authorisation.



<b>Author</b>	PJP
<b>Drawn by</b>	PJP
<b>Drawing date</b>	28/09/2020
<b>Checked by</b>	SM
<b>Checked date</b>	06/10/2020
<b>Scale</b>	Not to scale
<b>Part Number</b>	BN02-017C-C06-Z
<b>Title:</b>	BNC 12G SDI Crimp Bulkhead Jack, Hex Flange, Circular Locknut, Belden RG179DT, RG179B/U