

B Series

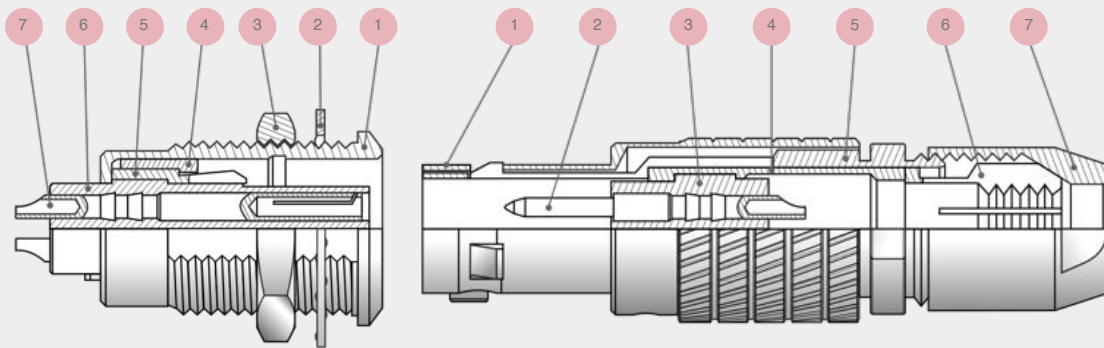
Push-Pull Precision Latching Connectors



Gigatronix

GTx™ Push-Pull Latching Connectors

B Series Part Section



Fixed Socket

- 1 Outer Shell
- 2 Locking Washer
- 3 Mounting Nut
- 4 Retaining Ring
- 5 Earthing Contact
- 6 Contact Block
- 7 Female Contact

Cable Plug

- Outer Housing 1
- Male Contact 2
- Contact Block 3
- Split Insert Spacer 4
- Latching Sleeve 5
- Cable Collet 6
- Back Nut 7

Introducing the GTx™ range of Push-Pull Latching Connectors

Already an established UK market leader in the manufacture and supply of coaxial connectors and cable assemblies, the new Gigatronix B series of Push-Pull latching connectors represent the first in a number of similar new products planned for launch in 2016.

Series Compatibility

The **GTx™ B series** are all mechanically intermateable and electrically compatible with other industry standard Push-Pull Latching connectors, including the Lemo* B series and the ODU* L series.

Cable Assembly

Our in house cable assembly facility can manufacture multiway Push-Pull Cable Assemblies in short lead times. Please contact our technical sales team to discuss your requirements.

* Lemo and ODU are acknowledged as Trademarks of their registered owners.

B Series Push-Pull Latching Range

Key Product Features

- Secure Push-Pull Latching System
- Compact design with wide range of interface options
- Matt chrome plated brass housing suitable for rugged applications
- Fully intermateable with industry standard B series connector types
- Alternative keyway options to avoid mis-mating errors
- Available in a range of termination options, i.e. solder, crimp, PCB mounting
- 360 degrees EMC shield screening
- Available as custom built assemblies - contact our technical sales team for details

Key Operational Specification

- In excess of 5000 mating cycles
- Corrosion Resistance: 144 hours salt spray
- Wide temperature operating range. -45 to 125 degrees centigrade
- Shock and vibration resistant: 100g, 6ms / 10-2000Hz, 15g.
- Humidity: Up to 95% at 60 degree centigrade
- IP50 Sealing performance

Contents

Product Overview	1 - 2
00 Series - Straight Plugs and Panel Sockets	3 - 4
0B Series - Straight Plugs and Panel Sockets	5 - 6
1B Series - Straight Plugs and Panel Sockets	7 - 8
2B Series - Straight Plugs and Panel Sockets	9 - 10
Electrical and Mechanical Specifications	11 - 12
Accessories - Strain Relief Boots and Collets	13
Recommended Cable Types	14

00 Series - Straight Plugs

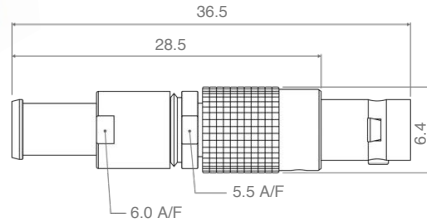


Fig. 1 - STYLE 15A

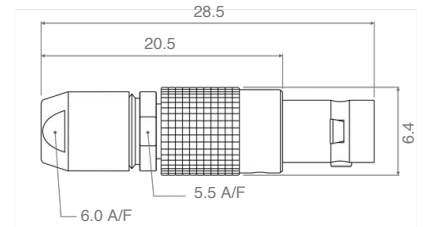
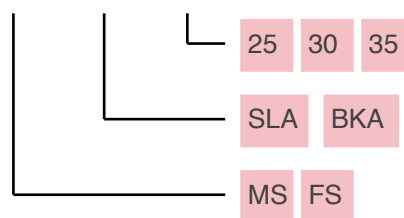


Fig. 2 - STYLE 15B

Layout	Contacts	Part Number	Fig	Description
	2	15A-00-02-MS-SLA-30	1	2 x Male Solder Contact, Fits Bend Relief
		15B-00-02-MS-SLA-30	2	2 x Male Solder Contact
	3	15A-00-03-MS-SLA-30	1	3 x Male Solder Contact, Fits Bend Relief
		15B-00-03-MS-SLA-30	2	3 x Male Solder Contact
	4	15A-00-04-MS-SLA-30	1	4 x Male Solder Contact, Fits Bend Relief
		15B-00-04-MS-SLA-30	2	4 x Male Solder Contact

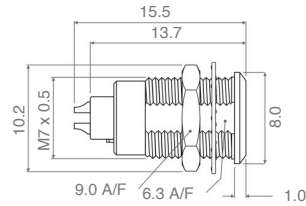
Part Numbering: 15A-00-02 - MS - SLA - 35



Product Variants

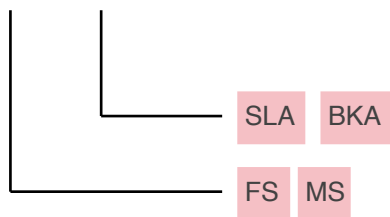
- 2.5, 3.0, 3.5mm Collet Set
- Silver or Black Chrome Plating
- Male or Female Contact Set

00 Series - Panel Sockets



Layout	Contacts	Part Number	Description
	2	62-00-02-FS-SLA	2 x Female Solder Contact
	3	62-00-03-FS-SLA	3 x Female Solder Contact
	4	62-00-04-FS-SLA	4 x Female Solder Contact

Part Numbering: 62-00-02 - FS - SLA



Product Variants

- Silver or Black Chrome Plating
- Female or Male Contact Set

0B Series - Straight Plugs

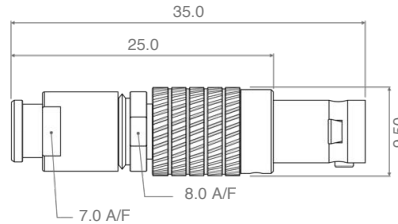


Fig. 1 - STYLE 15A

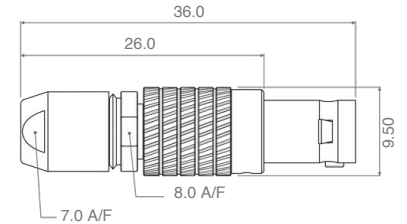
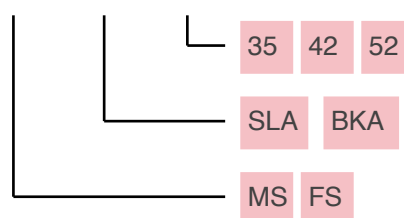


Fig. 2 - STYLE 15B

Layout	Contacts	Part Number	Fig	Description
	2	15A-0B-02-MS-SLA-52	1	2 x Male Solder Contact, Fits Bend Relief
		15B-0B-02-MS-SLA-52	2	2 x Male Solder Contact
	3	15A-0B-03-MS-SLA-52	1	3 x Male Solder Contact, Fits Bend Relief
		15B-0B-03-MS-SLA-52	2	3 x Male Solder Contact
	4	15A-0B-04-MS-SLA-52	1	4 x Male Solder Contact, Fits Bend Relief
		15B-0B-04-MS-SLA-52	2	4 x Male Solder Contact
	5	15A-0B-05-MS-SLA-52	1	5 x Male Solder Contact, Fits Bend Relief
		15B-0B-05-MS-SLA-52	2	5 x Male Solder Contact
	6	15A-0B-06-MS-SLA-52	1	6 x Male Solder Contact, Fits Bend Relief
		15B-0B-06-MS-SLA-52	2	6 x Male Solder Contact
	7	15A-0B-07-MS-SLA-52	1	7 x Male Solder Contact, Fits Bend Relief
		15B-0B-07-MS-SLA-52	2	7 x Male Solder Contact
	9	15A-0B-09-MS-SLA-52	1	9 x Male Solder Contact, Fits Bend Relief
		15B-0B-09-MS-SLA-52	2	9 x Male Solder Contact

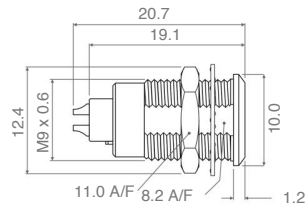
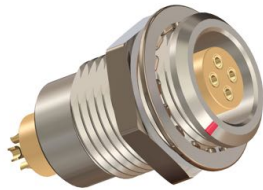
Part Numbering: 15A-0B-02 - MS - SLA - 52



Product Variants

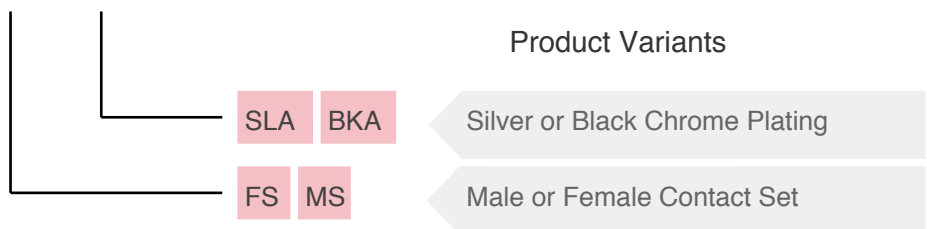
- 3.5, 4.2, 5.2mm Collet Set
- Silver or Black Chrome Plating
- Male or Female Contact Set

0B Series - Panel Sockets



Layout	No.	Part Number	Description
	2	62-0B-02-FS-SLA	2 x Female Solder Contact
	3	62-0B-03-FS-SLA	3 x Female Solder Contact
	4	62-0B-04-FS-SLA	4 x Female Solder Contact
	5	62-0B-05-FS-SLA	5 x Female Solder Contact
	6	62-0B-06-FS-SLA	6 x Female Solder Contact
	7	62-0B-07-FS-SLA	7 x Female Solder Contact
	9	62-0B-09-FS-SLA	9 x Female Solder Contact

Part Numbering: 62-0B-02 - FS - SLA



1B Series - Straight Plugs

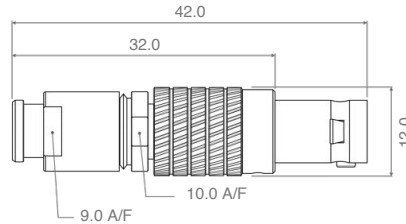


Fig. 1 - STYLE 15A

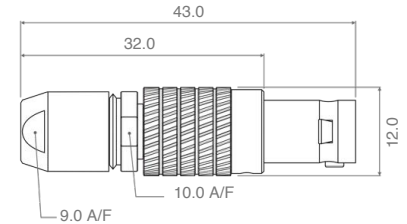
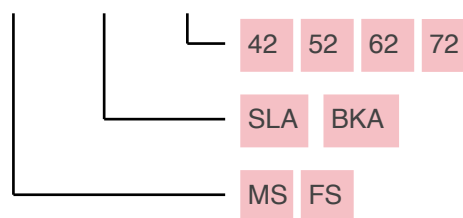


Fig. 2 - STYLE 15B

Layout	Contacts	Part Number	Fig	Description
	2	15A-1B-02-MS-SLA-62	1	2 x Male Solder Contact, Fits Bend Relief
		15B-1B-02-MS-SLA-62	2	2 x Male Solder Contact
	3	15A-1B-03-MS-SLA-62	1	3 x Male Solder Contact, Fits Bend Relief
		15B-1B-03-MS-SLA-62	2	3 x Male Solder Contact
	4	15A-1B-04-MS-SLA-62	1	4 x Male Solder Contact, Fits Bend Relief
		15B-1B-04-MS-SLA-62	2	4 x Male Solder Contact
	5	15A-1B-05-MS-SLA-62	1	5 x Male Solder Contact, Fits Bend Relief
		15B-1B-05-MS-SLA-62	2	5 x Male Solder Contact
	6	15A-1B-06-MS-SLA-62	1	6 x Male Solder Contact, Fits Bend Relief
		15B-1B-06-MS-SLA-62	2	6 x Male Solder Contact
	7	15A-1B-07-MS-SLA-62	1	7 x Male Solder Contact, Fits Bend Relief
		15B-1B-07-MS-SLA-62	2	7 x Male Solder Contact
	8	15A-1B-08-MS-SLA-62	1	8 x Male Solder Contact, Fits Bend Relief
		15B-1B-08-MS-SLA-62	2	8 x Male Solder Contact
	10	15A-1B-10-MS-SLA-62	1	10 x Male Solder Contact, Fits Bend Relief
		15B-1B-10-MS-SLA-62	2	10 x Male Solder Contact

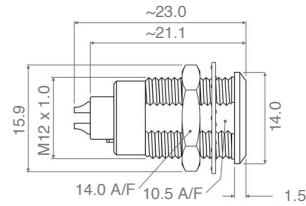
Part Numbering: 15A-1B-02 - MS - SLA - 42



Product Variants

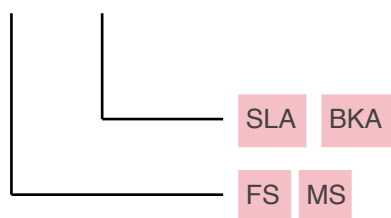
- 4.2, 5.2, 6.2, 7.2mm Collet Set
- Silver or Black Chrome Plating
- Male or Female Contact Set

1B Series - Panel Sockets



Layout	No.	Part Number	Description
	2	62-1B-02-FS-SLA	2 x Female Solder Contact
	3	62-1B-03-FS-SLA	3 x Female Solder Contact
	4	62-1B-04-FS-SLA	4 x Female Solder Contact
	5	62-1B-05-FS-SLA	5 x Female Solder Contact
	6	62-1B-06-FS-SLA	6 x Female Solder Contact
	7	62-1B-07-FS-SLA	7 x Female Solder Contact
	8	62-1B-08-FS-SLA	8 x Female Solder Contact
	10	62-1B-10-FS-SLA	10 x Female Solder Contact

Part Numbering: 62-1B-02 - FS - SLA



Product Variants

- Silver or Black Chrome Plating
- Female or Male Contact Set

2B Series - Straight Plugs

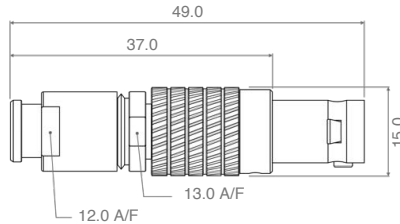


Fig. 1 - STYLE 15A

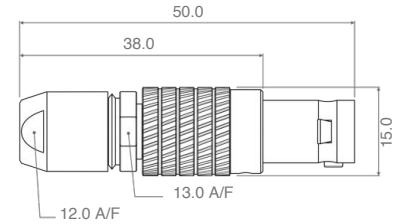
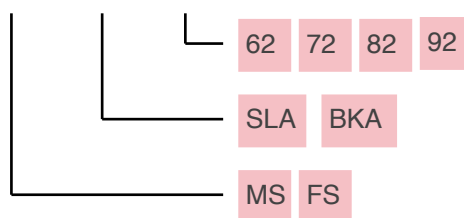


Fig. 2 - STYLE 15B

Layout	Contacts	Part Number	Fig	Description
	12	15A-2B-12-MS-SLA-62	1	12 x Male Solder Contact, Fits Bend Relief
		15B-2B-12-MS-SLA-62	2	12 x Male Solder Contact
	14	15A-2B-14-MS-SLA-62	1	14 x Male Solder Contact, Fits Bend Relief
		15B-2B-14-MS-SLA-62	2	14 x Male Solder Contact
	16	15A-2B-16-MS-SLA-62	1	16 x Male Solder Contact, Fits Bend Relief
		15B-2B-16-MS-SLA-62	2	16 x Male Solder Contact
	19	15A-2B-19-MS-SLA-62	1	19 x Male Solder Contact, Fits Bend Relief
		15B-2B-19-MS-SLA-62	2	19 x Male Solder Contact

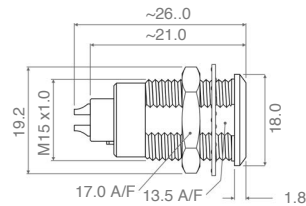
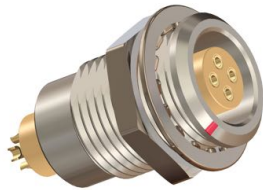
Part Numbering: 15A-2B-12 - MS - SLA - 62



Product Variants

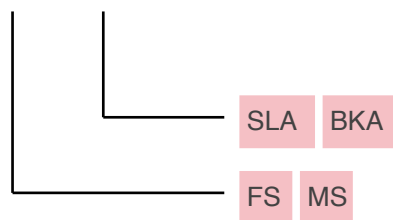
- 6.2, 7.2, 8.2, 9.2mm Collet Set
- Silver or Black Chrome Plating
- Male or Female Contact Set

2B Series - Panel Sockets



Layout	No.	Part Number	Description
	12	62-2B-12-FS-SLA	12 x Female Solder Contact
	14	62-2B-14-FS-SLA	14 x Female Solder Contact
	16	62-2B-16-FS-SLA	16 x Female Solder Contact
	19	62-2B-19-FS-SLA	19 x Female Solder Contact

Part Numbering: 62-2B-12 - FS - SLA



Product Variants

- Silver or Black Chrome Plating
- Female or Male Contact Set

Electrical & Mechanical Specifications

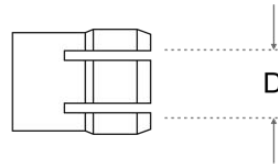
Layout	Contacts	00 Series				0B Series			
		Contact Diameter (mm)	Max. Conductor Diameter (mm)	Operating Current (A)	Operating Voltage (V)	Contact Diameter (mm)	Max. Conductor Diameter (mm)	Operating Current (A)	Operating Voltage (V)
	2	0.5	0.4	5.0	850	0.9	0.8	10.0	1050
	3	0.5	0.4	3	850	0.9	0.8	8.0	1050
	4	0.5	0.4	2	850	0.7	0.8	7.0	800
	5	--	--	--	--	0.7	0.8	6.5	900
	6	--	--	--	--	0.5	0.45	2.5	950
	7	--	--	--	--	0.5	0.45	2.5	850
	8	--	--	--	--	--	--	--	--
	9	--	--	--	--	0.5	0.45	2	650
	10	--	--	--	--	--	--	--	--
	12	--	--	--	--	--	--	--	--
	14	--	--	--	--	--	--	--	--
	16	--	--	--	--	--	--	--	--
	19	--	--	--	--	--	--	--	--

Electrical & Mechanical Specifications

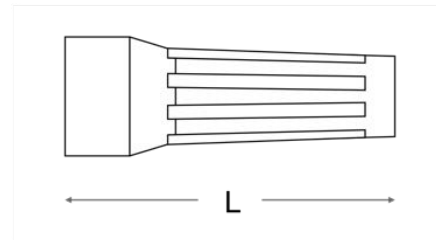
Layout	Contacts	1B Series				2B Series			
		Contact Diameter (mm)	Max. Conductor Diameter (mm)	Operating Current (A)	Operating Voltage (V)	Contact Diameter (mm)	Max. Conductor Diameter (mm)	Operating Current (A)	Operating Voltage (V)
	2	1.3	1.0	15.0	900	2.0	1.8	18.0	900
	3	1.3	1.0	12.0	750	1.6	1.4	17.0	750
	4	0.9	0.8	10.0	900	1.3	1.0	15.0	900
	5	0.9	0.8	9.0	830	1.3	1.0	14.0	830
	6	0.7	0.8	7.0	830	1.3	1.0	12.0	830
	7	0.7	0.8	7.0	750	1.3	1.0	11.0	750
	8	0.7	0.8	5.0	750	0.9	0.8	7.0	750
	9	--	--	--	--	--	--	--	--
	10	0.5	0.45	2.5	400	0.9	0.8	6.0	600
	12	--	--	--	--	0.7	0.8	5.5	600
	14	0.5	0.45	2.0	400	0.7	0.8	5.0	550
	16	0.5	0.45	1.5	300	0.7	0.8	5.0	500
	19	--	--	--	--	0.7	0.8	4.0	500

Accessories - B Series Cable Collets and Strain Relief

Collet



Strain Relief



Cable Diameter	Collet Sets				Bend Relief			
	00	0B	1B	2B	00	0B	1B	2B
D \ L	--	--	--	--	22mm	24mm	30mm	36mm
2.0 - 2.5mm	COLLET-00-25	--	--	--	GSB-00-25-0	--	--	--
2.0 - 3.0mm	COLLET-00-30	--	--	--	GSB-00-30-0	--	--	--
2.5 - 3.5mm	COLLET-00-35	COLLET-0B-35	--	--	GSB-00-35-0	GSB-0B-35-0	--	--
3.1 - 4.2mm	--	COLLET-0B-42	COLLET-1B-42	--	--	GSB-0B-42-0	GSB-1B-42-0	--
4.3 - 5.2mm	--	COLLET-0B-52	COLLET-1B-52	--	--	GSB-0B-52-0	GSB-1B-52-0	--
5.3 - 6.2mm	--	--	COLLET-1B-62	COLLET-2B-62	--	--	GSB-1B-62-0	--
6.3 - 7.2mm	--	--	--	COLLET-2B-72	--	--	--	GSB-2B-72-0
7.3 - 8.2mm	--	--	--	COLLET-2B-82	--	--	--	GSB-2B-82-0
8.3 - 9.2mm	--	--	--	COLLET-2B-92	--	--	--	GSB-2B-92-0

COLLET-XX-XX / GSB-XX-XX-X - Standard stock item

COLLET-XX-XX / GSB-XX-XX-X - Non-stocked item, available on request

Recommended Cable Types

Connector Part Number	LiYCY Type (Grey PVC Jacket)				Def.Stan 61-12 Type (Black PVC Jacket)			
	Gigatronix Cable Part Number	Conductor AWG	Rated Current	Jacket OD	Gigatronix Cable Part Number	Conductor AWG	Rated Current	Jacket OD
15A(B)-00-02-MS-SLA-35	--	--	--	--	CM02-30-PVC-SP-B1	30	0.25	3.0
15A(B)-00-03-MS-SLA-35	--	--	--	--	CM03-30-PVC-SP-B1	30	0.25	3.2
15A(B)-00-04-MS-SLA-35	--	--	--	--	CM04-30-PVC-SP-B1	30	0.25	3.4
15A(B)-0B-02-MS-SLA-XX	CM02-22-PVC-SP-G1	22	7.2	5.0	CM02-24-PVC-SP-B1	24	1.0	3.8
15A(B)-0B-03-MS-SLA-XX	CM03-22-PVC-SP-G1	22	7.2	5.4	CM03-24-PVC-SP-B1	24	1.0	4.0
15A(B)-0B-04-MS-SLA-XX	CM04-22-PVC-SP-G1	22	7.2	5.8	CM04-24-PVC-SP-B1	24	1.0	4.3
15A(B)-0B-05-MS-SLA-XX	CM05-22-PVC-SP-G1	22	7.2	6.1	CM06-30-PVC-SP-B1	30	0.25	3.8
15A(B)-0B-06-MS-SLA-XX	CM06-28-PVC-SP-G1	28	2.8	4.3	CM06-30-PVC-SP-B1	30	0.25	3.8
15A(B)-0B-07-MS-SLA-XX	CM08-28-PVC-SP-G1	28	2.8	4.4	CM09-30-PVC-SP-B1	30	0.25	4.2
15A(B)-0B-09-MS-SLA-XX	CM08-28-PVC-SP-G1	28	2.8	4.4	CM09-30-PVC-SP-B1	30	0.25	4.2
15A(B)-1B-02-MS-SLA-XX	CM02-20-PVC-SP-G1	20	9.6	5.4	CM02-20-PVC-SP-B1	20	2.5	6.5
15A(B)-1B-03-MS-SLA-XX	CM03-20-PVC-SP-G1	20	9.6	5.8	CM03-20-PVC-SP-B1	20	2.5	6.8
15A(B)-1B-04-MS-SLA-XX	CM04-22-PVC-SP-G1	22	7.2	5.8	CM04-24-PVC-SP-B1	24	1.0	4.3
15A(B)-1B-05-MS-SLA-XX	CM05-22-PVC-SP-G1	22	7.2	6.1	CM06-24-PVC-SP-B1	24	1.0	5.6
15A(B)-1B-06-MS-SLA-XX	CM06-22-PVC-SP-G1	22	6.3	6.6	CM06-24-PVC-SP-B1	24	1.0	5.6
15A(B)-1B-07-MS-SLA-XX	CM07-22-PVC-SP-G1	22	6.3	6.7	CM08-24-PVC-SP-B1	24	1.0	6.2
15A(B)-1B-08-MS-SLA-XX	CM08-22-PVC-SP-G1	22	6.3	7.4	CM08-24-PVC-SP-B1	24	1.0	6.2
15A(B)-1B-10-MS-SLA-XX	CM10-28-PVC-SP-G1	28	2.8	5.3	CM12-30-PVC-SP-B1	30	0.25	4.4
15A(B)-2B-12-MS-SLA-XX	CM12-22-PVC-SP-G1	22	6.3	8.7	CM12-24-PVC-SP-B1	24	1.0	6.9
15A(B)-2B-14-MS-SLA-XX	CM14-22-PVC-SP-G1	22	6.3	9.1	CM15-24-PVC-SP-B1	24	1.0	7.6
15A(B)-2B-16-MS-SLA-XX	CM16-22-PVC-SP-G1	22	4.5	9.6	CM18-24-PVC-SP-B1	24	1.0	8.4
15A(B)-2B-19-MS-SLA-XX	--	--	--	--	CM20-24-PVC-SP-B1	24	1.0	8.6

Innovation and Quality in Connectivity Solutions

Gigatronix Limited
Zullard House, 4 Downley Road
Havant, Hampshire
PO9 2NJ, UK
Tel: +44 (0)23 9245 4412
www.gigatronix.com

Taiwan Branch
4th Floor, Unit 3,
No. 475 Guangfu South Road,
Xinyi District, Taipei City
11074, Taiwan